



# **East Bay Regional Communications System Authority**



Participating agencies include Alameda and Contra Costa Counties and the following cities and special districts: Alameda, Albany, Antioch, Berkeley, Brentwood, Clayton, Concord, Danville, Dublin, El Cerrito, Emeryville, Fremont, Hayward, Hercules, Lafayette, Livermore, Martinez, Moraga, Newark, Oakley, Pinole, Pittsburg, Pleasant Hill, Pleasanton, Richmond, San Leandro, San Pablo, San Ramon, Union City, Walnut Creek, East Bay Regional Park District, Kensington Police Community Services District, Livermore Amador Valley Transit Authority, Moraga-Orinda Fire District, Rodeo-Hercules Fire District, San Ramon Valley Fire District, California Department of Transportation, Ohlone Community College District, Contra Costa Community College District, Dublin-San Ramon Services District and University of California, Berkeley

## **OPERATIONS COMMITTEE MEETING**

### **NOTICE OF REGULAR MEETING**

**DATE: October 14, 2022**

**TIME:** 11:00 a.m.

**PLACE:** Alameda County Office of Homeland Security and Emergency Services,  
Room 1013  
4985 Broder Blvd., Dublin, CA 94568

Notice is hereby given that a Operations Committee Meeting of the East Bay Regional Communications System Authority will be held on Friday, October 14, 2022 at 10:00 a.m.

### **Meeting Procedure During Coronavirus (COVID-19) Outbreak:**

Pursuant to the provisions of California Governor's March 4, 2020 State of Emergency Declaration and enactment of Assembly Bill 361 on September 16, 2021 which adopted exemptions to the Ralph Brown M. Act and the proposed findings to be adopted by the Board at this meeting, this meeting will be conducted by teleconference only in accordance with Government Code section 54953(e). No physical location will be available for this meeting. Members of the public may participate in this meeting, on Zoom at Meeting ID: 833 3739 3487 and Passcode: 842296 or by calling 1-253-215-8782. This meeting agenda is available online at <http://www.ebrcsa.org/meetings/finance-committee.page>.

- The Public will be asked if there is any comment or question concerning the meeting during the Public Comment Period and as each item is discussed.
- The Speaker may provide their name for the record if they so choose.

## **AGENDA**

---

1. Call to Order/Roll Call

2. Public Comments (Meeting Open to the Public):

At this time, the public is permitted to address the Committee on items within the Committee's subject matter jurisdiction that do not appear on the agenda. Please limit comments to a maximum of three (3) minutes. If you wish to comment on an item that is on the agenda, please wait until the item is read for consideration.

3. Presentation - None

4. Approval of Minutes of the April 22, 2022 Operations Committee Regular Meeting

**Alameda County Office of Homeland Security and Emergency Services  
4985 Broder Blvd, Dublin CA 94568 • (925) 803-7802 • [www.ebrcsa.org](http://www.ebrcsa.org)**

5. First Amendment to Services Agreement with Administrative Assistant Soto
6. Walton Lane Simulcast Site Add-On
7. Provide Direction on Budget Adjustment FY 21/22
8. Receive an Update on Encryption
9. Receive an Update on Microwave Ethernet/MPLS Project
10. Receive an Update on 10 Year Plan
11. Agenda Items for Next Meeting
  - EBRCSA Infrastructure Service Update Agreement and Maintenance
12. Adjournment

This AGENDA is posted in accordance with Government Code Section 54954.2(a)

*If requested, pursuant to Government Code Section 54953.2, this agenda shall be made available in appropriate alternative formats to persons with a disability, as required by Section 202 of the Americans with Disabilities Act of 1990 (42 U.S.C. Section 12132), and the federal rules and regulations adopted in implementation thereof. To make a request for disability-related modification or accommodation, please contact the EBRCSA at (925) 803-7802 at least 72 hours in advance of the meeting.*

I hereby certify that the attached agenda was posted 72 hours before the noted meeting.



Tom McCarthy, Executive Director  
October 7, 2022



**East Bay Regional  
Communications  
System Authority**



Participating agencies include Alameda and Contra Costa Counties and the following cities and special districts: Alameda, Albany, Antioch, Berkeley, Brentwood, Clayton, Concord, Danville, Dublin, El Cerrito, Emeryville, Fremont, Hayward, Hercules, Lafayette, Livermore, Martinez, Moraga, Newark, Oakley, Pinole, Pittsburg, Pleasant Hill, Pleasanton, Richmond, San Leandro, San Pablo, San Ramon, Union City, Walnut Creek, East Bay Regional Park District, Kensington Police Community Services District, Livermore Amador Valley Transit Authority, Moraga-Orinda Fire District, Rodeo-Hercules Fire District, San Ramon Valley Fire District, California Department of Transportation, Ohlone Community College District, Contra Costa Community College District, Dublin-San Ramon Services District and University of California, Berkeley

**AGENDA ITEM NO. 4.**

**AGENDA STATEMENT  
OPERATIONS COMMITTEE MEETING  
MEETING DATE: October 14, 2022**

**TO:** Operations Committee  
East Bay Regional Communications System Authority (EBRCSA)

**FROM:** Tom McCarthy, Executive Director  
East Bay Regional Communications System Authority

**SUBJECT:** Approval of Minutes of the April 22, 2022 Regular Operations Committee Meeting

**RECOMMENDATIONS:**

Approve the minutes of the April 22, 2022 Regular Operations Committee meeting.

**SUMMARY/DISCUSSION:**

The Operations Committee will consider approval of the minutes of the April, 22, 2022 Regular Operations Committee meeting.

**RECOMMENDED ACTION:**

It is recommended that the Committee approve the minutes of the April 22, 2022 Operations Committee meeting.

Attachment:

Attachment "A"- Draft Minutes April 22, 2022 Operations Committee Meeting



## **East Bay Regional Communications System Authority**



Participating agencies include Alameda and Contra Costa Counties and the following cities and special districts: Alameda, Albany, Antioch, Berkeley, Brentwood, Clayton, Concord, Danville, Dublin, El Cerrito, Emeryville, Fremont, Hayward, Hercules, Lafayette, Livermore, Martinez, Moraga, Newark, Oakley, Pinole, Pittsburg, Pleasant Hill, Pleasanton, Richmond, San Leandro, San Pablo, San Ramon, Union City, Walnut Creek, East Bay Regional Park District, Kensington Police Community Services District, Livermore Amador Valley Transit Authority, Moraga-Orinda Fire District, Rodeo-Hercules Fire District, San Ramon Valley Fire District, California Department of Transportation, Ohlone Community College District, Contra Costa Community College District, Dublin-San Ramon Services District and University of California, Berkeley

### **OPERATIONS COMMITTEE MEETING**

#### **REGULAR MEETING**

**DATE: April 22, 2022**

**TIME:** 10:00 a.m.

**PLACE:** Alameda County Office of Homeland Security and Emergency Services,  
Room 1013  
4985 Broder Blvd., Dublin, CA 94568

#### **DRAFT MINUTES**

- 
- 1. Call to Order/Roll Call:** A Regular meeting of the Operations Committee was held on April 22, 2022, remotely via Zoom Video Communications. The meeting was called to order at 10:00 a.m.

#### **Committee Members Present:**

G. Ahern, Sheriff, Alameda County Sheriff's Office  
R. Freeman, Fire Chief, Oakland Fire  
J. King, Chief of Police, Moraga  
D. Swing, Chief of Police, City of Pleasanton

#### **Staff:**

T. McCarthy, Executive Director  
C. Boyer, Auditor  
C. Soto, Administrative Assistant

#### **Public:**

G. Poole, Motorola Representative  
M. Larson, Motorola Representative

- 2. Public Comments:** None.
- 3. Approval of Minutes of the November 5, 2021 Operations Committee Regular Meeting**

On motion of Bm. King, seconded by Bm. Swing and by unanimous vote, the Operations Committee approved the minutes of the November 5, 2021 Operations Committee Regular meeting.

#### **4. Provide Direction on Budget Review FY 22/23**

Craig Boyer, Alameda County Auditor's Office, stated in regard to FY 22/23, the Authority is budgeting \$8.8 million in revenues, about \$600,000 higher than last year due to higher radio counts; on the expense side, the Authority is budgeting approximately \$7.2 million of expenditures; it is fairly consistent with last year's expenditure budget; there is a \$55,000 increase in operating expenses primarily for maintenance costs due to increases in maintenance contracts, as well as higher volumes of transactions. On the Capital expenditures side, the Authority was budgeting about \$2 million for capital improvements for projects that have been ongoing for the last several years including the TDMA upgrade; the last component of the expense side is debt service \$650,000 for payment of principal and interest on an annual basis. When you compare the budgeted revenue to the expenses, there is a net income of approximately \$1.6 million which is allocated to different categories of reserves. This supports the reserves consistent with the Authority's reserve policy. Based on what was projected for expenditures, the revenues sufficiently cover that, increasing balance to the Capital reserve, which will continue to support key System in maintaining and upgrading as needed.

On motion of Bm. King, seconded by Bm. Freeman and by unanimous vote, the Operations Committee agreed to recommend to the full Board a budget for FY 22/23 based on the information discussed.

#### **5. Increased Cost of Legal Services**

Executive Director McCarthy stated the Authority's legal counsel since 2007-08, Meyers Nave, informed him they had billed the Authority their standard rate since then. They had not implemented their annual price increase. They were not asking for retroactive pay, but the Authority's assigned attorney, Laura McKinney, is a general counsel that was being paid \$250 an hour now, and they would like to raise the rate to \$350 an hour. There is sufficient money in the budget to pay the \$350 an hour. The Authority budgets \$20,000 a year in legal fees, and this fiscal year the cost is projected to be under \$3,000. He is going to ask the Finance Committee if this needs to go to Board for approval.

The Operations Committee discussed if there is way to lock into \$350 per hour for more than 12 months, and also maybe see what other firms are out there in the future.

On motion of Bm. King, seconded Bm. Freeman and by unanimous vote, the Operations Committee agreed to recommend to the full Board that they accept an increase in cost of legal services with Meyers Nave professional law corporation to perform legal services for the East Bay Regional Communications System Authority (EBRCSA).

#### **6. Bay Alarm Camera Upgrade and Increased Monitoring Cost**

Executive Director McCarthy stated Bay Alarm informed him that the Authority's seven 3G security cameras at seven sights were turned off on March 1. Bay Alarm needs to put in either 4G or 5G cameras at those sites. There is \$22,000 now budgeted for the monitoring services, but the replacement and annual monitoring costs exceed that amount. Replacement cost of the cameras is \$28,455. The Authority currently pays \$1,700 a month for annual fees. The new yearly cost of monitoring services will be \$23,268. This contract is staying with the same company but upgrading. He has asked about other companies but is pleased with Bay Alarm

services. These new services will allow him to view, via an app, the camera feed, and it will be archived in the Cloud for 30 days. This will come with a budget change. This contract will not cause a rate increase to users.

On motion of Bm. King, seconded by Bm. Swing and by unanimous vote, the Operations Committee agreed to recommend to the full Board the purchase of seven (7) 4G/5G security cameras for the East Bay Regional Communications System Authority (EBRCSA) which will be monitored by Bay Alarm, 24/7, via current contract.

**7. Provide Direction regarding Appointment of Two Members of Finance Committee to a Sub Committee to assist in Recommendation of Compensation for Administrative Assistant**

The Operations Committee appointed Bms. Swing and King to assist Executive Director McCarthy and two members of the Finance Committee, in making a recommendation to the full Board for compensation for the Administrative Assistant.

**8. Receive an Update on the City of Antioch (Walton Lane Site)**

Executive Director McCarthy stated they had found a length of conduit to get electrical up the hill to the Walton Lane site, where there is currently no radio coverage. As Contra Costa County is replacing its old site at 651 Pine in Martinez, the equipment from that site can now be used at the Walton Lane site. He is currently reviewing a bid from Motorola. This site will assist Antioch police, EBRPD, AMR Ambulance, and Contra Costa County Sheriff's Department as this area has no coverage right now. He will be having a special meeting to discuss this once he has more information regarding costs.

**9. Receive an Update on the Wiedemann Site in San Ramon**

Executive Director McCarthy stated the Wiedemann site at the top of Norris Canyon Road in San Ramon has an area with no radio traffic. Phase 3, 4 and 5 of a Lennar development do not have communication for police and fire. San Ramon Valley Fire Protection District has an ordinance that requires a developer to maintain 95% on HIP radio coverage, so Lennar Homes is paying \$2.1 million to build the site due to the ordinance. They will be improving radio coverage in San Ramon. The Authority sent out a letter asking other member/non-member cities also adopt a similar ordinance requiring developers be responsible for maintaining the radio traffic cost improvements.

**10. Receive an Update on the Carquinez Site (651 Pine Replacement)**

See item 8. Equipment been removed.

**11. Receive an Update on the Biannual SUA II Upgrade**

Executive Director McCarthy stated it had been a rough couple of weeks. The System's technology is upgraded biennially. They are in the process of installing 200 dispatch computers, and replacing routers and switches. There have been teams at the master site for the past four weeks, and will be back next week as they are completing the upgrade. This has caused a glitch in the Nice recorders as all five are being replaced. It will be completed within the next couple of weeks.

## **12. Receive an Update on Encryption (Change Order 35)**

Executive McCarthy stated SB1000 regarding encryption has recently surfaced. This senate bill states you cannot encrypt your main dispatch channel. That is fine if you are a multi-seat dispatch center where you have plenty of people to run different channels. DOJ is still insisting agencies need to encrypt the channel where you are going to run your CORI and PINI and CLETS information. If you have a city with a single dispatcher, how do they run two channels. There was a vote held on the 19<sup>th</sup>, it was 4-1. States Sheriffs were the only ones that voted no. He has received calls from member agencies saying they owe money to Motorola for encryption and need to know what's going on. He has his order ready to go but SB 1000 has caused a pause in the process.

Bm. King asked if the AG stance had change with the new Attorney General.

Executive Director McCarthy stated, no, they are still requiring a channel to encrypt all CORI and CLETS info.

## **13. Receive an Update on Ethernet/MPLS Project**

Executive Director McCarthy stated they are replacing all the microwaves, and radio equipment will be replaced. They had to come up with Methods of Procedures (MOP) for each site. It will take radio sites off line and agencies will have to use their backup system for a couple of hours to several hours depending on your agency's size. They were creating a three-month plan right now as to provide advance notice. When your site is taken off, they will have a tech at your dispatch center for the duration so they can keep you advised and ensure that your backup system is working just fine. They will keep updating the three-month calendar. It will take about a year to complete the project. The microwaves are going from 10G to 11G. Bandwidth is increasing. Any microwave that the System touches will now be consistent in the radios, it will be ethernet/MPLS which will improve the pipeline, and the System's resilience and reliability.

## **14. Receive an Update on TDMA – Time Division Multiple Access**

Executive Director McCarthy stated they finished the TDMA. The System was built for 20,000 users so this doubled the bandwidth and installed all the infrastructure out in the field. Now they were changing out the radios. TDMA was working and they were getting zero busies. Now the System has a capability of 40,000 users.

## **15. Receive an Update on 10 Year Plan**

Executive Director McCarthy stated they were still working on the 10-Year plan. They had just tagged 560 new pieces of electronics as the first part of the SUA. They were doing asset tagging, tracking, replacement timeline and depreciation. The purpose is to have concrete information regarding equipment replacement costs to know if fee increases are needed.

**16. Agenda Items for Next Meeting:** Forward any items to Executive Director McCarthy.

**17. Adjournment:** With no further business coming before the Operations Committee, the meeting was adjourned at 10:45 a.m.



**East Bay Regional  
Communications  
System Authority**



Participating agencies include Alameda and Contra Costa Counties and the following cities and special districts: Alameda, Albany, Antioch, Berkeley, Brentwood, Clayton, Concord, Danville, Dublin, El Cerrito, Emeryville, Fremont, Hayward, Hercules, Lafayette, Livermore, Martinez, Moraga, Newark, Oakley, Pinole, Pittsburg, Pleasant Hill, Pleasanton, Richmond, San Leandro, San Pablo, San Ramon, Union City, Walnut Creek, East Bay Regional Park District, Kensington Police Community Services District, Livermore Amador Valley Transit Authority, Moraga-Orinda Fire District, Rodeo-Hercules Fire District, San Ramon Valley Fire District, California Department of Transportation, Ohlone Community College District, Contra Costa Community College District, Dublin-San Ramon Services District and University of California, Berkeley

**AGENDA ITEM NO. 5.**

**AGENDA STATEMENT  
OPERATIONS COMMITTEE  
MEETING DATE: October 14, 2022**

**TO:** Operations Committee  
East Bay Regional Communications System Authority (EBRCSA)

**FROM:** Thomas G. McCarthy, Executive Director  
East Bay Regional Communications System Authority

**SUBJECT:** First Amendment to Services Agreement with Administrative Assistant Soto

**RECOMMENDATIONS:**

Request Committee discuss and make a recommendation to the Board of Directors concerning the First Amendment to Services Agreement with Administrative Assistant Soto.

**SUMMARY/DISCUSSION:**

The Executive Director of East Bay Regional Communications System Authority (EBRCSA) on September 16, 2015 entered a contract with Caroline Soto as an Administrative Assistant for EBRCSA. The Executive Director is proposing to the Committee a First Amendment to the Administrative Assistant's Contract to increase the hourly rate. Administrative Assistant Soto's contract is the same hourly rate of, \$70.00 per hour, which the previous Administrative Assistant Heather Plamondon received. (See Exhibit A.)

The Executive Director is proposing an increase from \$70.00 per hour to \$97.00 to take effect on October 30, 2022, the increase is based upon the increase to the Consumer Price Index (CPI) for the years 2015-2022. The increase raises the hourly wage from \$70.00 to \$97.00 per hour.



**January – December CPI - % Increase**

<u>Year</u>	<u>% Increase</u>	<u>Beginning Hourly</u>	<u>Adjusted Hourly</u>
2015	3.20%	\$70.00	\$72.00
2016	3.50%	\$72.00	\$75.00
2017	2.90%	\$75.00	\$77.00
2018	4.50%	\$77.00	\$80.00
2019	2.50%	\$80.00	\$82.00
2020	1.70%	\$82.00	\$83.00
2021	7.60%	\$83.00	\$89.00
2022	8.80%	\$89.00	\$97.00

**FISCAL IMPACT:**

If the Committee approves this First Amendment, the increase to the Administrative Assistant’s compensation would equal \$20,370.00 for the Fiscal Year 2022/2023. In anticipation of Committee recommendation, a budget change will not be necessary for FY 2022/2023 Budget. The change does not require an increase in the cost to EBRCSA members.

EBRCSA Operating Budget Administration

**OPERATING EXPENSES FY21-22**

Administration Assistant	FY 21-22 Final Budget	FY21-22 Projected	FY22-23 Budget	Change Fy22 vs FY24
	\$40,000	\$11,273	\$40,000	(\$28,727)

**RECOMMENDED ACTION:**

It is recommended that the Committee discuss and reach a consensus for the increase to the Administrative Assistant’s Caroline Soto Compensation via the First Amendment to her contract.

Attachment:

Attachment “A” – Standard Services Agreement with Administrative Assistant Soto

Attachment “B” – First Amendment to the Services Agreement with Caroline Soto

Attachment “C” - Consumer Price Index

**EAST BAY REGIONAL COMMUNICATIONS SYSTEM AUTHORITY  
STANDARD SERVICES AGREEMENT**

This Agreement ("Agreement"), dated as of September 16, 2015, is by and between the East Bay Regional Communications System Authority ("EBRCSA"), and Caroline P. Soto ("Contractor").

**RECITALS**

Whereas, EBRCSA desires to obtain support services ("Services"), as more fully described in Exhibit A hereto, "Scope of Services;" and

Whereas, Contractor is professionally qualified to provide such services and is willing to provide same to EBRCSA on the terms and conditions set forth herein.

NOW, THEREFORE, the parties hereto agree as follows:

**GENERAL TERMS AND CONDITIONS**

1. **SCOPE OF SERVICES; PAYMENT; EXHIBITS.** Contractor agrees to provide all Services described in Exhibit A, for payment pursuant to Exhibit B, Payment Terms. Exhibits A and B are attached hereto and incorporated herein by this reference, for a term of one year commencing with the execution of this agreement.
2. **INDEPENDENT CONTRACTOR:** No relationship of employer and employee is created by this Agreement; it being understood and agreed that Contractor is an independent contractor and can perform work for others absent a conflict of interest. Contractor is not the agent or employee of EBRCSA in any capacity whatsoever and EBRCSA shall not be liable for any acts or omissions by Contractor or for any obligations or liabilities incurred by Contractor.

Contractor shall have no claim under this Agreement or otherwise for seniority, vacation time, vacation pay, sick leave, personal time off, overtime, health insurance medical care, hospital care, retirement benefits, social security, disability, workers' compensation, or unemployment insurance benefits, civil service protection, or employee benefits of any kind.

Contractor shall be solely liable for and obligated to pay directly all applicable payroll taxes (including federal and state income taxes) or contributions for unemployment insurance or old age pensions or annuities which are imposed by any governmental entity in connection with the labor used or which are measured by wages, salaries or other remuneration paid to its officers, agents or employees and agrees to indemnify and hold EBRCSA harmless from any and all liability which EBRCSA may incur because of Contractor's failure to pay such amounts.

In carrying out the work contemplated herein, Contractor shall comply with all applicable federal and state workers' compensation and liability laws and regulations with respect to the officers, agents and/or employees conducting and participating in the work; and agrees that such officers, agents, and/or employees will be considered as independent contractors and shall not be treated or considered in any way as officers, agents and/or employees of EBRCSA.

Contractor does, by this Agreement, agree to perform her said work and functions at all times in strict accordance with currently approved methods and practices in her field and acknowledges that the sole interest of EBRCSA is to insure that said Services shall be performed and rendered in a competent, efficient, timely and satisfactory manner and in accordance with the standards required by EBRCSA.

Notwithstanding the foregoing, if EBRCSA determines that pursuant to state and federal law Contractor is an employee for purposes of income tax withholding, EBRCSA may upon two (2) weeks' notice to Contractor, withhold from payments to Contractor hereunder federal and state income taxes and pay said sums to the federal and state governments.

3. **INDEMNIFICATION:** To the fullest extent permitted by law, Contractor shall hold harmless, defend and indemnify EBRCSA, its Board of Directors, officers, employees and agents (collectively, "Indemnitees") from and against any and all claims, losses, damages, liabilities and expenses, including but not limited to attorneys' fees, arising out of or resulting from the performance of Services under this Agreement, provided that any such claim, loss, damage, liability or expense is attributable to bodily injury, sickness, disease, death or to injury to or destruction of property, including the loss therefrom, or to any violation of federal, state or municipal law or regulation, which arises out of or is any way connected with the performance of this agreement (collectively, "Liabilities") except where such Liabilities are caused solely by the negligence or willful misconduct of any Indemnitee. EBRCSA may, at its option, participate in the defense of any such claim without relieving Contractor of any obligation hereunder. All insurance shall name the EBRCSA, its directors, officers, agents and employees (if any) as additional insureds and shall provide primary coverage with respect to the EBRCSA.
4. **INSURANCE:** Contractor shall maintain at all times during the performance of this Agreement a general liability insurance policy with a minimum occurrence coverage in the amount of \$1,000,000 and an automobile liability insurance policy in the minimum amount of \$300,000, to cover any claims arising out of Contractor's performance of Services under this Agreement. All insurance shall name EBRCSA, its directors, officers, agents and employees (if any) as additional insureds and shall provide primary coverage with respect to EBRCSA. All insurance policies shall: (a) provide that the insurance carrier shall not cancel,

terminate or otherwise modify the terms and conditions of said policies except upon thirty (30) days written notice to the EBRCSA Executive Director; (b) be evidenced by the original Certificate of Insurance and the insurance carrier's standard form endorsement evidencing the required coverage; and (c) be approved as to form and sufficiency by the EBRCSA Executive Director. Contractor shall promptly forward all insurance documents to EBRCSA.

5. **CONFORMITY WITH LAW AND SAFETY:** In performing Services under this Agreement, Contractor shall observe and comply with all applicable laws, ordinances, codes and regulations of governmental agencies, including federal, state, municipal, and local governing bodies, having jurisdiction over the scope of Services provided by Contractor.
6. **TRAVEL EXPENSES:** Contractor shall not be allowed or paid travel expenses unless set forth in this Agreement.
7. **TAXES:** Payment of all applicable federal, state, and local taxes shall be the sole responsibility of the Contractor.
8. **OWNERSHIP OF DOCUMENTS:** Contractor hereby assigns to EBRCSA and its assignees all copyright and other use rights in any and all proposals, plans, specification, designs, drawings, sketches, renderings, models, reports and related documents (including computerized or electronic copies) respecting in any way the subject matter of this Agreement, whether prepared by EBRCSA, the Contractor, or third parties at the request of the Contractor (collectively, "Documents and Materials"). This assignment explicitly includes the electronic copies of all above stated documentation.

Contractor also hereby assigns to the EBRCSA and its assignees all copyright and other use rights in any Documents and Materials including electronic copies stored in Contractor's Information System, respecting in any way the subject matter of this Agreement.

Contractor shall be permitted to retain copies, including reproducible copies and computerized copies, of said Documents and Materials. Contractor agrees to take such further steps as may be reasonably requested by EBRCSA to implement the aforesaid assignment. If for any reason said assignment is not effective, Contractor hereby grants EBRCSA and any assignee of EBRCSA an express royalty-free license to retain and use said Documents and Materials. EBRCSA's rights under this Section 8 shall apply regardless of the degree of completion of the Documents and Materials and whether or not Contractor's services as set forth in Exhibit A to this Agreement have been fully performed or paid for..

9. **CONFLICT OF INTEREST; CONFIDENTIALITY:** Contractor covenants that she presently has no interest, and shall not have any interest, direct or indirect, which would conflict in any manner with the performance of Services required under this Agreement. Without limitation, Contractor represents to and agrees with the EBRCSA that Contractor has no present, and will have no future, interest adverse or potentially adverse to EBRCSA, as determined in the reasonable judgment of the Board of Directors of EBRCSA.

Contractor agrees that any information, whether proprietary or not, made known to or discovered by her during the performance of or in connection with this Agreement will be kept confidential and not be disclosed to any other person. Contractor agrees to immediately notify EBRCSA in accordance with Section 9 of this Agreement, if she is requested to disclose any information made known to or discovered by her during the performance of or in connection with this Agreement. These conflict of interest and future service provisions and limitations shall remain fully effective five (5) years after termination of Services to EBRCSA hereunder.

10. **NOTICES:** All notices, requests, demands, or other communications under this Agreement shall be in writing. Notices shall be given for all purposes as follows:

**Personal delivery:** When personally delivered to the recipient, notices are effective on delivery.

**First Class Mail:** When mailed first class to the last address of the recipient known to the party giving notice, notice is effective three (3) mail delivery days after deposit in a United States Postal Service office or mailbox.

**Certified Mail:** When mailed certified mail, return receipt requested, notice is effective on receipt, if delivery is confirmed by a return receipt.

**Overnight Delivery:** When delivered by overnight delivery (Federal Express/Airborne/United Parcel Service/DHL Worldwide Express) with charges prepaid or charged to the sender's account, notice is effective on delivery, if delivery is confirmed by the delivery service.

**Telex or facsimile transmission:** When sent by telex or facsimile to the last telex or facsimile number of the recipient known to the party giving notice, notice is effective on receipt, provided that (a) a duplicate copy of the notice is promptly given by first-class or certified mail or by overnight delivery, or (b) the receiving party delivers a written confirmation of receipt. Any notice given by telex or facsimile shall be deemed received on the next business day if it is received after 5:00 p.m. (recipient's time) or on a non-business day.



Addresses for purpose of giving notice are as follows:

To EBRCSA: East Bay Regional Communication System Authority  
Alameda County Office of Homeland Security and  
Emergency Services  
4985 Broder Blvd.  
Dublin CA. 94568  
Attn: Tom McCarthy

To Contractor: Caroline P. Soto  
7693 Cardigan Court  
Dublin, CA 94568  
(925) 803-5895

Any correctly addressed notice that is refused, unclaimed, or undeliverable because of an act or omission of the party to be notified shall be deemed effective as of the first date that said notice was refused, unclaimed, or deemed undeliverable by the postal authorities, messenger, or overnight delivery service.

Any party may change its address or telex or facsimile number by giving the other party notice of the change in any manner permitted by this Agreement.

11. **USE OF EBRCSA PROPERTY:** Contractor shall not use EBRCSA property (including equipment, instruments and supplies) or personnel for any purpose other than in the performance of her obligations under this Agreement.
12. **TERMINATION:** Either party may terminate this Agreement without cause upon thirty (30) days written notice pursuant to Section 10 of this Agreement. In the event of termination, Contractor shall be entitled to payment, but only for Services provided hereunder prior to the effective date of said termination. Said payment shall be computed in accordance with Exhibit B hereto, provided that the maximum amount payable to Contractor for her Services shall be limited to payment for time actually worked prior to the effective date of said termination.
13. **CHOICE OF LAW; VENUE:** This Agreement shall be governed by the laws of the State of California. Venue for any litigation shall be in Alameda County, California.
14. **ENTIRE AGREEMENT:** This Agreement, including all attachments, exhibits, and any other documents specifically incorporated into this Agreement, shall constitute the entire agreement between EBRCSA and Contractor relating to the subject matter of this Agreement. As used herein, Agreement refers to and includes any documents incorporated herein by reference and any exhibits or attachments. This Agreement supersedes and merges all previous understandings,

and all other agreements, written or oral, between the parties and sets forth the entire understanding of the parties regarding the subject matter thereof. The Agreement may not be modified except by a written document signed by both parties.

15. **HEADINGS:** Headings herein are for convenience of reference only and shall in no way affect interpretation of the Agreement.
16. **MODIFICATION OF AGREEMENT:** This Agreement may be supplemented, amended or modified only by the mutual agreement of the parties. No supplement, amendment or modification of this Agreement shall be binding unless it is in writing and signed by authorized representatives of both parties.
17. **ASSURANCE OF PERFORMANCE:** If at any time EBRCSA believes Contractor may not be adequately performing her obligations under this Agreement or that Contractor may fail to complete the Services as required by this Agreement, EBRCSA may request from Contractor prompt written assurances of performance and a written plan acceptable to EBRCSA, to correct the observed deficiencies in Contractor's performance. Contractor shall provide such written assurances and written plan within ten (10) calendar days of its receipt of EBRCSA request and shall thereafter diligently commence and fully perform such written plan. Contractor acknowledges and agrees that any failure to provide such written assurances and written plan within the required time is a material breach under this Agreement.
18. **SEVERABILITY:** If any part of this Agreement or the application thereof is declared to be invalid for any reason, such invalidity shall not affect the other provisions of this Agreement which can be given effect without the invalid provision or application, and to this end the provisions of this Agreement are deemed severable.
19. **SIGNATORIES:** By signing this Agreement, signatories warrant and represent that they have executed this Agreement in their authorized capacity.

[SIGNATURES ON FOLLOWING PAGE.]

Contract No. 15-001

IN WITNESS WHEREOF, the parties hereto have executed this Agreement as of the day and year first above written.

EAST BAY REGIONAL  
COMMUNICATIONS SYSTEM  
AUTHORITY

CONTRACTOR

By: Thomas S. McCarthy  
Signature

By: Caro L. P. Soto  
Signature

Name: THOMAS S. MCCARTHY  
(Printed)

Name: Caroline P. Soto  
(Printed)

Title: EXECUTIVE DIRECTOR

Title: Administrative Assistant

Date: Sept. 16, 2015

Approved as to form:

Robin Donoghue, Authority Counsel



**FIRST AMENDMENT TO  
EAST BAY REGIONAL COMMUNICATIONS SYSTEM AUTHORITY  
SERVICES AGREEMENT WITH CAROLINE P. SOTO FOR SERVICE AS  
ADMINISTRATIVE ASSISTANT**

THIS FIRST AMENDMENT TO SERVICES AGREEMENT ("**First Amendment**"), dated as of October 30, 2022 ("Effective Date"), is entered into between the EAST BAY REGIONAL COMMUNICATIONS SYSTEM AUTHORITY ("**the Authority**") and CAROLINE P. SOTO ("**Soto**"), (collectively, the "**Parties**").

**RECITALS**

WHEREAS, the Parties entered into a Standard Services Agreement, dated September 16, 2015, Contract Number 15-001 with respect to the provision of Administrative Assistant services by Soto to the Authority ("Agreement"); and

WHEREAS, the Parties desire to amend the Payment Terms set forth in Exhibit B of the Existing Agreement.

NOW, THEREFORE, in consideration of the mutual covenants contained herein and for other good and valuable consideration, the receipt and sufficiency of which are hereby acknowledged, the Parties hereby agree as follows:

1. Exhibit B, Payment Terms. Section 3 of Exhibit B of the Agreement is hereby amended to read as follows with deleted text in ~~strike through~~ and added text in underlining.
  3. Contractor will be compensated at the rate of Ninety-Seven (\$97.00) Dollars ~~Seventy Dollars \$70.00~~ per hour for work performed in accordance with Exhibit A, the "Definition of Services"
2. Miscellaneous

Except as hereby amended, all of the other terms and provisions of the Existing Agreement shall remain unchanged and in full force and effect. This Amendment may be executed in counterparts, each of which shall be deemed an original instrument and all such counterparts, taken together, shall constitute one and the same instrument. Signatures delivered by facsimile or electronic mail shall be deemed effective as originals.

[SIGNATURE PAGE FOLLOWS]

**IN WITNESS WHEREOF**, the Parties have caused this Amendment to be executed in duplicate as of the date first herein written.

**FOR CONTRACTOR**

By: \_\_\_\_\_

**CAROLINE P. SOTO**

**FOR EAST BAY REGIONAL  
COMMUNICATIONS SYSTEM AUTHORITY**

By: \_\_\_\_\_

Name: \_\_\_\_\_

Title: \_\_\_\_\_

Approved as to form:

\_\_\_\_\_  
Laura McKinney, Authority Counsel

**CONSUMER PRICE INDEXES PACIFIC CITIES AND U. S. CITY AVERAGE**  
**December 2021**

(All items indexes, 1982-84=100 unless otherwise noted. Not seasonally adjusted.)

MONTHLY DATA	All Urban Consumers (CPI-U)						Urban Wage Earners and Clerical Workers (CPI-W)					
	Indexes			Percent Change			Indexes			Percent Change		
				Year ending	1 Month ending					Year ending	1 Month ending	
	Dec 2020	Nov 2021	Dec 2021	Nov 2021	Dec 2021	Dec 2021	Dec 2020	Nov 2021	Dec 2021	Nov 2021	Dec 2021	Dec 2021
U. S. City Average.....	260.474	277.948	276.802	6.8	7.0	0.3	254.081	273.042	273.925	7.6	7.8	0.3
West.....	276.593	294.986	296.102	6.5	7.1	0.4	288.282	287.891	289.076	7.2	7.8	0.4
West - Size Class A <sup>1</sup> .....	285.258	303.213	304.574	6.2	6.8	0.4	275.600	294.476	295.852	6.8	7.4	0.5
West - Size Class B/C <sup>2</sup> .....	160.840	172.214	172.722	6.9	7.4	0.3	160.507	172.916	173.533	7.6	8.1	0.4
Mountain.....	107.489	116.065	116.728	7.7	8.8	0.6	107.850	117.093	117.779	8.3	9.2	0.6
Pacific.....	107.471	114.103	114.454	6.1	6.5	0.3	107.640	115.067	115.475	6.8	7.3	0.4
Los Angeles-Long Beach-Anaheim, CA.....	279.560	296.790	297.925	6.0	6.6	0.4	270.167	287.940	288.910	6.4	6.9	0.3
BI-MONTHLY DATA (Published for odd months)	Indexes			Percent Change			Indexes			Percent Change		
				Year ending	2 Months ending					Year ending	2 Months ending	
	Nov 2020	Sep 2021	Nov 2021	Sep 2021	Nov 2021	Nov 2021	Nov 2020	Sep 2021	Nov 2021	Sep 2021	Nov 2021	Nov 2021
	Riverside-San Bernardino-Ontario, CA <sup>3</sup> .....	108.626	115.557	117.206	6.8	7.9	1.4	109.021	116.254	117.840	7.0	8.1
San Diego-Carlsbad, CA.....	306.334	324.138	326.422	6.6	6.6	0.7	280.228	309.351	311.014	7.2	7.2	0.9
Urban Hawaii.....	286.872	301.691	302.332	5.0	5.4	0.1	284.293	299.128	300.106	5.2	5.6	0.3
BI-MONTHLY DATA (Published for even months)	Indexes			Percent Change			Indexes			Percent Change		
				Year ending	2 Months ending					Year ending	2 Months ending	
	Dec 2020	Oct 2021	Dec 2021	Oct 2021	Dec 2021	Dec 2021	Dec 2020	Oct 2021	Dec 2021	Oct 2021	Dec 2021	Dec 2021
	Phoenix-Mesa-Scottsdale, AZ <sup>4</sup> .....	145.660	157.254	159.650	7.1	9.7	1.7	144.665	156.649	159.460	7.4	10.2
San Francisco-Oakland-Hayward, CA.....	302.948	313.265	315.805	3.8	4.2	0.9	295.687	309.656	312.019	5.2	5.5	0.8
Seattle-Tacoma-Bellevue, WA.....	283.409	303.099	304.856	6.5	7.6	0.8	279.306	297.673	301.139	6.3	7.8	1.1
Urban Alaska.....	227.259	242.708	243.568	6.3	7.2	0.4	226.615	242.539	243.612	6.2	7.5	0.4

<sup>1</sup> Population over 2,500,000    <sup>2</sup> Population 2,500,000 and under, Dec 1996 = 100    <sup>3</sup> Dec 2017=100    <sup>4</sup> Dec 2001=100

NOTE: In January 2018, BLS introduced a new geographic area sample for the Consumer Price Index (CPI): [www.bls.gov/regions/west/factsheet/2018cpirevisionwest.pdf](http://www.bls.gov/regions/west/factsheet/2018cpirevisionwest.pdf)

1967=100 base year indexes and tables with semiannual and annual average data are available at: [www.bls.gov/regions/west/factsheet/consumer-price-index-data-tables.htm](http://www.bls.gov/regions/west/factsheet/consumer-price-index-data-tables.htm)

Release date January 12, 2022. The next release date is scheduled for February 10, 2022. For questions, please contact us at [BLInfoSF@bls.gov](mailto:BLInfoSF@bls.gov) or (415) 625-2270.



**East Bay Regional  
Communications  
System Authority**



Participating agencies include Alameda and Contra Costa Counties and the following cities and special districts: Alameda, Albany, Antioch, Berkeley, Brentwood, Clayton, Concord, Danville, Dublin, El Cerrito, Emeryville, Fremont, Hayward, Hercules, Lafayette, Livermore, Martinez, Moraga, Newark, Oakley, Pinole, Pittsburg, Pleasant Hill, Pleasanton, Richmond, San Leandro, San Pablo, San Ramon, Union City, Walnut Creek, East Bay Regional Park District, Kensington Police Community Services District, Livermore Amador Valley Transit Authority, Moraga-Orinda Fire District, Rodeo-Hercules Fire District, San Ramon Valley Fire District, California Department of Transportation, Ohlone Community College District, Contra Costa Community College District, Dublin-San Ramon Services District and University of California, Berkeley

**AGENDA ITEM NO. 6.**

**AGENDA STATEMENT  
OPERATIONS COMMITTEE  
MEETING DATE: October 14, 2022**

**TO:** Operations Committee  
East Bay Regional Communications System Authority (EBRCSA)

**FROM:** Thomas McCarthy, Executive Director  
East Bay Regional Communications System Authority

**SUBJECT:** Walton Lane Simulcast Site Add-On

**RECOMMENDATIONS:**

Provide direction regarding adding a Simulcast Site to Walton Lane in Antioch.

**SUMMARY/DISCUSSION:**

The Antioch Police Department contacted the Executive Director in 2017 and expressed difficulty transmitting and receiving radio transmission on the East Bay Regional Communications System Authority (EBRCSA) radios. Antioch Police, East Bay Regional Parks Police, Contra Costa County Sheriff, Contra Costa County Fire, and AMR Ambulance have identified the area as James Donlon Blvd. in Antioch. The old radio system used by Antioch Police still works in the area, however, the Officers and Fire Fighters have to change radios when they are in the area and can no longer monitor radios still on the EBRCSA system and the same applies for the Officers and Firefighters on the EBRCSA channel cannot hear the Officer or Firefighter who changed radios. We have performed some preliminary investigation into the reason for this and the EBRCSA antenna at Kregor and Shadybrook are on hill sides which do not allow radio transmission into this area. When someone attempts to transmit while in this area, the transmission cannot reach the EBRCSA towers. The old system, which has an antenna at Walton Lane, points directly into the area and that is why the old system works in this area.

Motorola has provided a statement of work which will provide communication to this area and improve communications also in the City of Pittsburg. The statement of work has been reviewed by the Executive Director of EBRCSA and members of the Contra Costa County Department of Information Technology (DoIT). The project required EBRCSA to identify where the equipment will be placed and provide a shelter and space on the existing tower for the installation. In addition, EBRCSA must apply for FCC licenses and permits. A team consisting of the EBRCSA Executive Director, Motorola Project Manager, and Technician from Contra Costa County DoIT performed site visits and the Walton Lane site has a shelter which belongs to the City of Antioch. However, there is insufficient room to add the necessary equipment. The site has adequate space to add a Shelter and Generator for the new EBRCSA equipment. The Executive Director has been working with Scott Buenting, Project Manager for the City of Antioch, Capital Improvement Division. We have worked to identify the power necessary from PG&E to power the site. We do not have sufficient power and must have a transformer installed at the bottom of the hill and bring electricity up the hill to the new Shelter where the equipment will be installed. Existing conduit has been located so that a 850-foot trench is not necessary. Mr. Buenting is working with PG&E to arrange power be brought up the hill.

The Executive Director has been working with Motorola to identify what is necessary to build the site. In the updated quote from Motorola, it had specific items which will be the responsibility of EBRCSA. The City of Antioch will be responsible for items outlined in the scope of work such as providing the land, permits, contract with American Tower for the antennas. Contra Costa County has a site in Martinez which had to be moved and as a result the equipment from the transition between sites will be utilized at the Walton Lane Site. Motorola has provided the cost to EBRCSA for the Walton Lane Simulcast Site Add On at \$1,745,580.00.

Sections of the proposal outline responsibility for the project between EBRCSA, City of Antioch, and Motorola.

### **FINANCIAL IMPACT:**

Initially, when EBRCSA was built the City of Antioch was unable to join due to Financial issues. East Bay Regional Park District Police were not a member of EBRCSA. The two agencies are now members of EBRCSA and need the site to operate safely in the James Donlon area. The site will also assist Contra Costa County Fire, Contra Costa County Sheriff's Office, and American Medical Response. The cost to EBRCSA is a onetime cost and there is sufficient funding to pay for the project. The Executive Director does not recommend financing the project as EBRCSA has done recently utilizing a lease agreement. The project will not require an increase to member fees.

### **RECOMMENDED ACTION:**

It is requested that the Committee review the information provided and provide a recommendation to the Board of Directors regarding the recommendation from the Executive Director to move forward with this project. The plan has been reviewed by the Contra Costa County Department Radio Technician, and engineers at CSI, our contract engineering firm.

Attachments:

“A” – Motorola Walton Lane Simulcast Site Add-On



**East Bay Regional  
Communications  
System Authority**



Participating agencies include Alameda and Contra Costa Counties and the following cities and special districts: Alameda, Albany, Antioch, Berkeley, Brentwood, Clayton, Concord, Danville, Dublin, El Cerrito, Emeryville, Fremont, Hayward, Hercules, Lafayette, Livermore, Martinez, Moraga, Newark, Oakley, Pinole, Pittsburg, Pleasant Hill, Pleasanton, Richmond, San Leandro, San Pablo, San Ramon, Union City, Walnut Creek, East Bay Regional Park District, Kensington Police Community Services District, Livermore Amador Valley Transit Authority, Moraga-Orinda Fire District, Rodeo-Hercules Fire District, San Ramon Valley Fire District, California Department of Transportation, Ohlone Community College District, Contra Costa Community College District, Dublin-San Ramon Services District and University of California, Berkeley

**AGENDA ITEM NO. 6.**

**AGENDA STATEMENT  
FINANCE COMMITTEE  
MEETING DATE: October 14, 2022**

**TO:** Finance Committee  
East Bay Regional Communications System Authority (EBRCSA)

**FROM:** Thomas McCarthy, Executive Director  
East Bay Regional Communications System Authority

**SUBJECT:** Walton Lane Simulcast Site Add-On

**RECOMMENDATIONS:**

Provide direction regarding adding a Simulcast Site to Walton Lane in Antioch.

**SUMMARY/DISCUSSION:**

The Antioch Police Department contacted the Executive Director in 2017 and expressed difficulty transmitting and receiving radio transmission on the East Bay Regional Communications System Authority (EBRCSA) radios. Antioch Police, East Bay Regional Parks Police, Contra Costa Sheriff, Contra Costa County Fire, and AMR Ambulance have identified the area as James Donlon Blvd. in Antioch. The old radio system used by Antioch Police still works in the area, however, the Officers and Fire Fighters have to change radios when they are in the area and can no longer monitor radios still on the EBRCSA system and the same applies for the Officers and Firefighters on the EBRCSA channel cannot hear the Officer or Firefighter who changed radios. We have performed some preliminary investigation into the reason for this and the EBRCSA antenna at Kregor and Shadybrook are on hill sides which do not allow radio transmission into this area. When someone attempts to transmit while in this area, the transmission cannot reach the EBRCSA towers. The old system, which has an antenna at Walton Lane, points directly into the area and that is why the old system works in this area.

Motorola has provided a statement of work which will provide communication to this area and improve communications also in the City of Pittsburg. The statement of work has been reviewed by the Executive Director of EBRCSA and members of the Contra Costa County Department of Information Technology Department of Information Technology (DoIT). The project required EBRCSA to identify where the equipment will be placed and provide a shelter and space on the existing tower for the installation. In addition, EBRCSA must apply for FCC licenses and permits. A team consisting of the EBRCSA Executive Director, Motorola Project Manager, and Technician from Contra Costa County DoIT performed site visits and the Walton Lane site has a shelter which belongs to the City of Antioch. However, there is insufficient room to add the necessary equipment. The site has adequate space to add a Shelter and Generator for the new EBRCSA equipment. The Executive Director has been working with Scott Buenting, Project Manager for the City of Antioch, Capital Improvement Division. We have worked to identify the power necessary from PG&E to power the site. We do not have sufficient power and must have a transformer installed at the bottom of the hill and bring electricity up the hill to the new Shelter where the equipment will be installed. Existing conduit has been located so that a 850 foot trench is not necessary. Scott is working with PG&E on arranging for the power to be brought up the hill.

The Executive Director has been working with Motorola to identify what is necessary to build the site. In the updated quote from Motorola is had specific items which will be the responsibility of EBRCSA. The City of Antioch will be responsible for items outlined in the scope of work such as providing the land, permits, contract with American Tower for the antennas. Contra Costa County has a site in Martinez which had to be moved and as a result the equipment from the transition between sites will be utilized at the Walton Lane Site. Motorola has provided the cost to EBRCSA for the Walton Lane Simulcast Site Add On at \$1,745,580.00.

Sections of the proposal outline responsibility for the project between EBRCSA, City of Antioch, and Motorola.

### **FINANCIAL IMPACT:**

Initially when EBRCSA was built the City of Antioch was unable to join due to Financial issues. East Bay Regional Police were not a member of EBRCSA. The two agencies are now members of EBRCSA and need the site to operate safely in James Donlon area. The site will also assist Contra Costa Fire, Contra Costa Sheriff's Office, and American Medical Response. The cost to EBRCSA is a onetime cost and there is sufficient funding to pay for the project, I do not recommend financing the project as we have done recently utilizing a lease agreement. The project will not require an increase to member fees.

### **RECOMMENDED ACTION:**

It is requested that the Committee review the information provided and provide a recommendation to the Board of Directors concerning the recommendation from the Executive Director to move forward with this project. The plan has been reviewed by the Contra Costa County Department Radio Technician, and engineers at CSI, our contract engineering firm.



Attachments:

“A” – Motorola Walton Lane Simulcast Site Add-On



# EAST BAY REGIONAL COMMUNICATIONS SYSTEM AUTHORITY

WALTON LANE SIMULCAST SITE ADD-ON

SEPTEMBER 22, 2022

The design, technical, pricing, and other information ("Information") furnished with this submission is proprietary and/or trade secret information of Motorola Solutions, Inc. ("Motorola Solutions") and is submitted with the restriction that it is to be used for evaluation purposes only. To the fullest extent allowed by applicable law, the Information is not to be disclosed publicly or in any manner to anyone other than those required to evaluate the Information without the express written permission of Motorola Solutions.

MOTOROLA, MOTO, MOTOROLA SOLUTIONS, and the Stylized M Logo are trademarks or registered trademarks of Motorola Trademark Holdings, LLC and are used under license. All other trademarks are the property of their respective owners. © 2022 Motorola Solutions, Inc. All rights reserved.

# TABLE OF CONTENTS

## Section 1

System Description .....	1-1
1.1 Simulcast Remote Site Add-On .....	1-1

## Section 2

System Description .....	2-1
2.1 EBRCSA System .....	2-1
2.2 Additional Solution .....	2-1
2.3 Walton Lane Simulcast Remote Site.....	2-1

## Section 3

Statement of WOrk .....	3-1
3.1 Motorola Solutions Responsibilities .....	3-1
3.2 Motorola Solutions Civil Work Responsibilities .....	3-2
3.2.1 Site Development at Walton Lane Site.....	3-2
3.3 EBRCSA Responsibilities .....	3-3
3.4 EBRCSA Civil Work Responsibilities .....	3-3
3.5 Assumptions.....	3-4

## Section 4

Equipment List.....	4-1
---------------------	-----

## Section 5

Functional Acceptance Test Plan.....	5-1
--------------------------------------	-----

## Section 6

Project Schedule.....	6-1
-----------------------	-----

## Section 7

Coverage Verification.....	7-1
7.1 Informational Only Coverage MAP .....	7-1
7.2 Informational Only Coverage Survey Map .....	7-3

## Section 8

Warranty and Maintenance Services .....	8-1
8.1 Warranty Services EBRCSA Channel Expansions .....	8-1
8.2 Warranty Services for Redundant Microwave Hop.....	8-1

## Section 9

Pricing.....	9-1
9.1 Pricing Summary .....	9-1
9.2 Payment Terms .....	9-2
9.3 Materials and Labor Price Increase .....	9-2



## Section 10

Contractual Documentation.....	10-1
--------------------------------	------



Motorola Solutions, Inc.  
1303 E. Algonquin Rd.  
Schaumburg, IL 60196  
USA

Tel. + 1 847 576 5000  
Fax + 1 847 538 6020

September 22, 2022

Mr. Tom McCarthy  
East Bay Regional Communications System Authority  
4985 Broder Blvd.  
Dublin, CA 94568

Subject: Walton Lane Simulcast Site Add-On

Dear Mr. McCarthy,

Motorola Solutions, Inc. ("Motorola Solutions") is pleased to have the opportunity to provide East Bay Regional Communications System Authority the following Proposal to create a new 10 channel TDMA DDM Simulcast Site with repurposed equipment to the Contra Costa East Cell at Walton Lane.

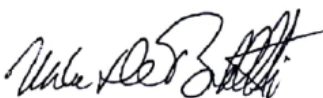
Once again, the Motorola Solutions project team has taken great care to propose a solution that will meet your needs and provide unsurpassed value. To best meet EBRCSA's functional and operational specifications, Motorola Solutions includes a combination of hardware, software, and services specified in full in Section 1 of the Proposal.

- Optimization of the relocated 10 Channel TDMA DDM Simulcast Site
- 1 – 48V DC Battery Plant
- 1 – Pepero 8' x12' walk in shelter and Generator

As you know, under Section 3.4 of the Communications System Agreement (CSA), dated July, 7, 2009, as amended, 2020, between EBRCSA and Motorola Solutions (the "CSA"), EBRCSA may purchase additional goods and services from the CSA. Motorola Solutions' proposal is based on the assumption that EBRCSA will use this right under Section 3.4 of the CSA for the proposed transaction. Therefore, as in the past, EBRCSA may accept the proposal by executing a Change Order to the current CSA that we have prepared for you. This proposal shall remain valid for 90 days from the date of this cover letter.

Motorola Solutions will be pleased to address any questions you may have regarding this proposal. Please direct any questions to your Motorola Solutions Senior Account Manager, Michael Larson at (530) 333-7584, michael.larson@motorolasolutions.com. Motorola Solutions appreciates your continued confidence in our company, products, and services. We look forward to continuing our relationship and implementing this project with EBRCSA.

Sincerely,



Michael De Benedetti  
MSSSI Vice-President  
Motorola Solutions, Inc.



SECTION 1

# SYSTEM DESCRIPTION

## 1.1 SIMULCAST REMOTE SITE ADD-ON

In response to the East Bay Regional Communications System Authority (EBRCSA) request for improving coverage in the James Donlon corridor of Antioch in the Contra Costa East cell, Motorola Solutions has prepared this proposal. This proposal includes the necessary services to optimize the relocated site from Carquinez. The existing temporary site which is planned to be repurposed and used at Walton Lane consists of twelve (12) 700 MHz TDMA and Dynamic Dual Mode (DDM) simulcast channels today and is configured as a remote site in the existing EBRCSA 700MHz trunked system as part of the Contra Costa County Central cell. This site will be relocated from the temporary Carquinez site to Walton Lane by EBRCSA to operate as an additional simulcast remote site in the Contra Costa East cell with existing three (3) sites including Kregor Peak (prime site), Shadybrook, and Los Vaqueros.

Motorola Solutions has refined its RF site design through its latest ASTRO releases and is pleased to offer our Expandable Site Sub-System (ESS) as our preferred Simulcast system platform. The ESS offers many features not found in other site solutions including:

- Integrated networking components:
  - Ethernet router(s).
- Shared power supplies among radio components:
  - -48V DC power.

The ESS (pictured on right) can support a total of six base radios which can support up to six (6) P25 Phase 1 (FDMA) channels, twelve (12) P25 Phase 2 (TDMA) talk-paths, or any combination in-between. Conventional channels can be supported within the ESS as well. This proposal includes support for the following:

Two (2) existing EBRCSA GTR ESS racks with ten (10) DDM capable channels capable of supporting up to eighteen (18) talkpaths.

The Walton Lane Simulcast remote site has to operate in the 700 MHz band similar to the temporary site that is in place today at Carquinez and therefore will continue to reuse the existing combiners and multicoupler with the channels retuned.



**Figure 1-1: GTR Expandable Site Sub-System (ESS)**

SECTION 2

# SYSTEM DESCRIPTION

## 2.1 EBRCSA SYSTEM

The East Bay Regional Communications System Authority (EBRCSA) trunked infrastructure design currently consists of simulcast subsystems and ASTRO 25 standalone repeater sites. The simulcast subsystems also known as "cells" provide coverage and capacity to the various EBRCSA agencies based on the operational area and number of users in each cell.

The EBRCSA Simulcast Site and Channel count for each cell as of today.

- EBRCSA P25 Simulcast Cells.
- 4-Site, 10-Channel 800 MHz Contra Costa West Cell.
- 4-Site, 10-Channel 700 MHz Alameda East Cell.
- 4-Site, 18-Channel 700 MHz Alameda Northwest Cell.
- 7-Site, 12-Channel 700 MHz Alameda Southwest Cell.
- 8-Site, 12-Channel 700 MHz Contra Costa Central Cell. – Addition of 9th site at Weidemann is ongoing.
- 3-Site, 10-Channel 700 MHz Contra Costa East Cell.
- 1-site, 6-Channel Stand-Alone 800 MHz repeater site for Crane Ridge.
- 1- site, 4-Channel Stand-Alone 800 MHz repeater site for Marsh Creek.

## 2.2 ADDITIONAL SOLUTION

The simulcast cell will also require the addition of the following:

- One (1) Redundant Aviat Microwave System Link to Kregor Peak.
- Pepro 8'x12' Walk in shelter.
- 35 kW generator at Walton Lane Site.
- -48 VDC Battery System.
- Radio Frequency Distribution System.

## 2.3 WALTON LANE SIMULCAST REMOTE SITE

Our proposed simulcast remote site solution for EBRCSA includes the following summary of equipment:

- One (1) 1 Redundant Aviat Microwave System with Antennas and Lines.
- One (1) 8x12 Pepro walk-in shelter with Automatic Transfer Switch (ATS).



- One (1) Transmit Antenna.
- One (1) Receive Antenna.
- Receive Tower Top Amplifier (TTA).
- 350-feet of 7/8-inch Coaxial TX/RX cable.
- RF Connectors.
- Required Lightning Arrestors.
- Four (4) 7-foot equipment racks. (DC, MW, & two (2) replacement for the Temp ESS).
- -48V DC Power System with 696 AH Battery Backup.
- One (1) 35KW generator.
- One (1) new MPLS router.

The Walton Lane remote site will be configured for ten 700MHz channels in the ESS configuration for use on the A2021.1 system. The removal of two channels from the temporary Carquinez site's ESS racks is a customer responsibility.





SECTION 3

# STATEMENT OF WORK

Motorola Solutions is proposing to East Bay Regional Communications System Authority (EBRCSA) the configuration and optimization of the following equipment at the specified locations as shown in Table 1.

Table 3-1:

Site Name	Major Equipment
LMR (Walton Lane )	Add Ten Channel Remote Simulcast Site to the Contra Costa East Simulcast Cell. (Relocated temporarily at Carquinez site). Configure and Optimize the Remote Site.
Microwave (Walton Lane)	Install and configure 1 Redundant Aviat Microwave Link and 1 MPLS router.
Site Development (Walton Lane )	<ul style="list-style-type: none"> <li>- Engineering services for site drawings and regulatory approvals – Included.</li> <li>- Site acquisition services – Not included.</li> <li>- Zoning Services – Not included.</li> <li>- Clearing type – Light.</li> <li>- New shelter size – 8-foot x 12-foot.</li> <li>- New fuel tank size – 285 gallons- , Type – Diesel sub-base.</li> <li>- New generator size – 35 kW, Type – Outdoor.</li> </ul>

The document delineates the general responsibilities between Motorola Solutions and EBRCSA as agreed to by contract.

## 3.1 MOTOROLA SOLUTIONS RESPONSIBILITIES

Motorola Solutions’ general responsibilities include the following:

- Schedule the configuration and optimization of the radio site in agreement with EBRCSA.
- Perform the installation of the Pepro walk-in shelter.
- Perform the installation of the Aviat MW link from Walton Lane to Kregor Peak Prime site.
- Perform the installation of the LMR antenna system on the existing ATC tower.
- Perform the configuration and optimization of the EBRCSA supplied and installed 10-channel remote simulcast site equipment described above.
- Coordinate the activities of all Motorola Solutions subcontractors under this contract.
- Administer safe work procedures for installation.
- Provide EBRCSA with the appropriate system interconnect specifications.



## 3.2 MOTOROLA SOLUTIONS CIVIL WORK RESPONSIBILITIES

### 3.2.1 Site Development at Walton Lane Site

#### Site Preparation

- Obtain the permits such as electrical, building, and construction permits, and coordinate any inspections with local authorities that may be needed to complete site development work.
- Provide one-time mobilization costs for the construction crews. Any remobilization due to interruptions/delays that are out of Motorola's control will result in additional costs.
- Supply and install gravel surfacing to a depth of 6 inches, including herbicide treatment and geotextile fabric installation in the site area, (not to exceed 432 square feet).

#### Site Components Installation

- Construct 1 foundation for the 35 kW generator with reinforcing steel necessary for foundations.
- Supply and install 1 prefabricated Pepero shelter 8-foot x 12-foot.
- Supply and install 1 standby power generator (35 kW) located within 20 feet of the ATS, including interconnection wiring between the generator, transfer switch, and site electrical service mains.
- Supply and install a perimeter grounding system around the shelter and generator to meet current Motorola's R56 standards.
- Supply and install 1 freestanding 24-inch-wide cable/ice bridge from the existing ice bridge to the shelter (up to 10 linear feet).

#### Antenna and Transmission Line Installation

- Install 2 antenna(s) for the RF system.
- Install up to 350 linear feet of 7/8-inch transmission line.
- Perform sweep tests on transmission lines.

#### Completion Criteria

- Site development completed per issued for construction (IFC) construction drawings, project requirements, contractual obligations (including any customer/Motorola approved changes) and approved by EBRCSA.
  - This shall be confirmed by contractor and reviewed with Motorola construction manager and project manager before inspections occur.
- All jurisdictional and contractual required testing and inspections to be performed by the contractor. (Contractual testing and inspections defined and agreed to with project team and customer prior to project kick off; vendor solely responsible for conducting, coordinating and paying for all jurisdictional testing and inspections ).
- Motorola site development checklist shall be completed and signed off by contractor prior to customer inspection. (Review with project team and customer and amend checklist as required at project kick off or before work begins).



- Site turn-over package completed and turned over to Motorola (As defined and agreed to with project team and customer).
- All punch list and deficiencies shall be completed prior to customer and Motorola inspections.

### 3.3 EBRCSA RESPONSIBILITIES

EBRCSA will assume responsibility for the installation and performance of all other equipment and work necessary for completion of this project that is not provided by Motorola Solutions. All EBRCSA work shall be completed within a timely manner. EBRCSA general responsibilities include the following:

- The City of Antioch update/ amend the Lease Agreement with American Tower with LMR antenna system and MW dish and waveguide.
- The City of Antioch to coordinate a Structural Analysis with ATC to ensure the tower will support the antenna and dish proposed at the Walton Lane site.
- The City of Antioch to coordinate, supply, install 200-Amp 1PH service to the Pepro 8'x12' Walk in shelter.
- Ensure that the tower used for this site installation meets R56 standards and can support the proposed LMR and microwave antenna systems.
- Ensure communications site has 220VAC circuits required for 48V DC power system.
- Ensure site location has required space and accessibility for the proposed shelter and generator installation.
- Will install and configure all 48V DC equipment and be responsible for all electrical connectivity.
- Obtain all FCC and local licensing and updates for the Walton Lane site.
- Obtain frequencies for project as required.
- Will be responsible for site access, and permitting required for project implementation.
- Will relocate and reinstall any equipment that is to be repurposed from the temporary Carquinez site, including GTR ESS racks and RFDS equipment. .
- Provide required system interconnections into the Kregor Peak Contra Costa East Cell Prime Site.
- Will provide a dedicated delivery point, such as a warehouse, for receipt, inventory and storage of equipment prior to delivery to the site(s).
- Coordinate the activities of all EBRCSA's vendors or other contractors.

### 3.4 EBRCSA CIVIL WORK RESPONSIBILITIES

- Provide personnel to observe construction progress and testing of site equipment according to the schedule provided by Motorola.



- As applicable (based on local jurisdictional authority), the Customer will be responsible for any installation or up-grades of the electrical system in order to comply with NFPA 70, Article 708.
- As required, provide property deed or lease agreement, and boundary survey, along with existing as-built drawings of the site and site components to Motorola for conducting site engineering at county owned sites.
- Provide property deed or lease agreement, and boundary survey, along with existing as-built drawings of the site and site components to Motorola for conducting site engineering.
- Provide a right of entry letter from the site owner for Motorola to conduct field investigations.
- Maintain existing access road in order to provide clear and stable entry to the site for heavy-duty construction vehicles, cement trucks and cranes. Sufficient space must be available at the site for these vehicles to maneuver under their own power, without assistance from other equipment.

## 3.5 ASSUMPTIONS

Motorola Solutions has made several assumptions in preparing this proposal, which are noted below.

- Final system design and coverage analysis are based on FCC Licensing Information.
- All existing sites or equipment locations will have adequate electrical power support the requirements of the system described.
- There is a site R56 compliant ground connection within 33-feet of new equipment installation location.
- No new site routers or switches have been provided as it is assumed existing equipment from the temporary Carquinez site will be reused.
- Existing tower will have adequate space and size to support the P25 and Microwave antenna networks requirements of the Walton Lane Site Add-on described.
- Any site/location upgrades or modifications are the responsibility of EBRCSA.
- Any tower stress analysis or tower upgrade requirements are the responsibility of The City of Antioch / ATC.
- EBRCSA will be responsible for removal of equipment necessary to accommodate the new Motorola Solutions provided equipment.
- Approved FCC licensing will be provided by EBRCSA.
- Approved local, State, or Federal permits as may be required for the installation and operation of the proposed equipment, are the responsibility of the City of Antioch / EBRCSA.
- Any required system interconnections not specifically outlined here will be provided by EBRCSA, including but not limited to dedicated phone circuits.



- EBRCSA will provide a dedicated delivery point for receipt, inventory, and storage of equipment prior to delivery to the site.
- No prevailing wage, certified payroll, mandatory union workers or mandatory minority workers are required for this work.
- All work is assumed to be done during normal business hours as dictated by time zone (Monday thru Friday, 7:30 a.m. to 5:00 p.m.).
- All recurring and non-recurring utility costs [including, but not limited to, generator fuel (except first fill), electrical, Telco] will be borne by the Customer or site owner.
- All utility installations shall be coordinated and paid for by the site owner and located at jointly agreed to location within or around the new communications shelter or equipment room.
- Site will have adequate electrical service for the new shelter and tower. Utility transformer, transformer upgrades, line, or pole extensions have not been included.
- Pricing has been based on National codes such IBC or BOCA. Local codes or jurisdictional requirements have not been considered in this proposal.
- Hazardous materials are not present at the work location. Testing and removal of hazardous materials, found during site investigations, construction or equipment installation will be the responsibility of the customer.
- A maximum of 30 days will be required for obtaining approved building permits from time of submission, and a maximum of 60 days will be required for zoning approvals from time of submittal.
- No improvements are required for concrete trucks, drill rigs, shelter delivery, and crane access.
- If extremely harsh or difficult weather conditions delay the site work for more than a week, Motorola will seek excusable delays rather than risk job site safety.
- Training is not included in this proposal.
- There is no Frequency Planning, Fleetmapping, or Subscriber programming and installation content included in this scope.
- Coverage guarantee is not included or implied in this proposal.
- A Field Acceptance Test will be performed on the system upon cutover.
- Informational Coverage Map is developed based on the proposed design.
- Motorola Solutions is not responsible for interference caused or received by the Motorola Solutions provided equipment except for interference that is directly caused by the Motorola Solutions provided transmitter(s) to the Motorola Solutions provided receiver(s). Should the EBRCSA's system experience interference, Motorola Solutions can be contracted to investigate the source and recommend solutions to mitigate the issue.



SECTION 4

# EQUIPMENT LIST

This section lists the equipment necessary for the proposed solution.

SUB SYS	BLOCK	LIM	O	QTY	NOMENCLATURE	DESCRIPTION
TX/RX REMO	RFDS	1	-	1	DS440034392	TTA 440, MOTOROLA TOWER TOP UNIT, 794-824 MHZ, N CONNS, AUTOQUAD W/ BY
TX/RX REMO	RFDS	2	-	1	DS440030684	TTA 440, MOTOROLA CU (ESS), 794-824 MHZ, BYPASS, TEST PORT, 1AC
TX/RX REMO	RFDS	3	-	1	DS89030692	794-824 MHZ, 6 MHZ BANDWIDTH PRESELECTOR FOR 440 TTA
TX1 ANTENN	ANTENNA	4	-	1	DSCC80708P	OMNI, CORPORATE COLLINEAR, 8DBD, 746-870MHZ, PIM & 25KW PIP RATED
TX1 ANTENN	UPPERJUMPR	5	-	15	DSEC450	COAXIAL CABLE, 1/2" 50 OHM CORRUGATED COPPER WITH BLACK PE JACKET
TX1 ANTENN	UPPERJUMPR	6	-	2	DS716M50V12N1	CONNECTOR, 7/16 DIN MALE INTERFACE FOR EC4-50
TX1 ANTENN	JUMPER	7	-	2	DSWKU	WK-U, UNIVERSAL WEATHERPROOFING KIT
TX1 ANTENN	MAINLINE	8	-	200	DSEC550A	COAXIAL CABLE, "A" SERIES 7/8 IN 50 OHM CORRUGATED COPPER W/ BLACK PE
TX1 ANTENN	MAINLINE	9	-	2	DS716F50V78N1	CONNECTOR, 7/16 DIN FEMALE INTERFACE FOR EC5-50-A
TX1 ANTENN	MAINLINE	10	-	5	DSGKC78	CLIP ON GROUND KIT FOR 7/8" CABLES, 5' LEAD W/ UNATTACHED 3/8" TWO HOL
TX1 ANTENN	MAINLINE	11	-	1	DSHG78	HG-78, LACE-UP HOISTING GRIP FOR 7/8" AIRCELL COAX
TX1 ANTENN	ANTACC	12	-	7	DSA317695	CABLE HANGER KIT HARDWARE KIT (10PCS) FOR BOTH 1/2" AND 7/8"CABLE
TX1 ANTENN	SURGE	13	-	1	DSTSXDFMBF	RF SPD, 698-2700MHZ DC BLOCK HIGH PWR, DIN FEM/MALE BI-DIR W/ BRACKET
TX1 ANTENN	SURGE	14	-	1	DSGSAKITD	GROUND STRAP KIT - DIN
TX1 ANTENN	LOWERJUMPR	15	-	25	DSEC450	COAXIAL CABLE, 1/2" 50 OHM CORRUGATED COPPER WITH BLACK PE JACKET



SUB SYS	BLOCK	LIM	O	QTY	NOMENCLATURE	DESCRIPTION
TX1 ANTENN	LOWERJUMPR	16	-	2	DS716M50V12N1	CONNECTOR, 7/16 DIN MALE INTERFACE FOR EC4-50
TX1 ANTENN	RFMIXING	17	-	10	DSEC450	COAXIAL CABLE, 1/2" 50 OHM CORRUGATED COPPER WITH BLACK PE JACKET
TX1 ANTENN	RFMIXING	18	-	1	DS716M50V12N1	CONNECTOR, 7/16 DIN MALE INTERFACE FOR EC4-50
TX1 ANTENN	RFMIXING	19	-	1	DS716M50V12N1	CONNECTOR, 7/16 DIN MALE INTERFACE FOR EC4-50
TX1 ANTENN	RFMIXING	20	-	1	DSAPM7487K248AC	ADVANCED POWER MONITOR 740-870MHZ 36-60VDC/110-240VAC
TX1 ANTENN	RFMIXING	21	-	10	DSEC150HF	COAXIAL CABLE, 1/4" HIFLEX, 50 OHM WITH BLACK PE JACKET
TX1 ANTENN	RFMIXING	22	-	2	DSNM50B14X	CONNECTOR, N MALE INTERFACE FOR EC1-50-HF
TX1 ANTENN	RFMIXING	23	-	10	DSEC150HF	COAXIAL CABLE, 1/4" HIFLEX, 50 OHM WITH BLACK PE JACKET
TX1 ANTENN	RFMIXING	24	-	2	DSNM50B14X	CONNECTOR, N MALE INTERFACE FOR EC1-50-HF
RX1 ANTENN	ANTENNA	25	-	1	DSCC80708T3P	OMNI, CORP COLLINEAR, 8DBD, 746-870MHZ, 3DEG DT, PIM & 25KW PIP RATED
RX1 ANTENN	UPPERJUMPR	26	-	15	DSEC450	COAXIAL CABLE, 1/2" 50 OHM CORRUGATED COPPER WITH BLACK PE JACKET
RX1 ANTENN	UPPERJUMPR	27	-	1	DSNM50V12	CONNECTOR, N MALE INTERFACE FOR EC4-50
RX1 ANTENN	UPPERJUMPR	28	-	1	DS716M50V12N1	CONNECTOR, 7/16 DIN MALE INTERFACE FOR EC4-50
RX1 ANTENN	JUMPER	29	-	5	DSWKU	WK-U, UNIVERSAL WEATHERPROOFING KIT
RX1 ANTENN	TTAJUMPR	30	-	5	DSEC450	COAXIAL CABLE, 1/2" 50 OHM CORRUGATED COPPER WITH BLACK PE JACKET
RX1 ANTENN	TTAJUMPR	31	-	2	DSNM50V12	CONNECTOR, N MALE INTERFACE FOR EC4-50
RX1 ANTENN	MAINLINE	32	-	200	DSEC550A	COAXIAL CABLE, "A" SERIES 7/8 IN 50 OHM CORRUGATED COPPER W/ BLACK PE
RX1 ANTENN	MAINLINE	33	-	2	DSNF50V78N1	CONNECTOR, N FEMALE INTERFACE FOR EC5-50-A
RX1 ANTENN	MAINLINE	34	-	5	DSGKC78	CLIP ON GROUND KIT FOR 7/8" CABLES, 5' LEAD W/ UNATTACHED 3/8" TWO HOL
RX1 ANTENN	MAINLINE	35	-	1	DSHG78	HG-78, LACE-UP HOISTING GRIP FOR 7/8" AIRCELL COAX
RX1 ANTENN	TESTLINE	36	-	200	DSEC450	COAXIAL CABLE, 1/2" 50 OHM CORRUGATED COPPER WITH BLACK PE JACKET



SUB SYS	BLOCK	LIM	O	QTY	NOMENCLATURE	DESCRIPTION
RX1 ANTENN	TESTLINE	37	-	1	DSNM50V12	CONNECTOR, N MALE INTERFACE FOR EC4-50
RX1 ANTENN	TESTLINE	38	-	1	DSNF50V12	CONNECTOR, N FEMALE INTERFACE FOR EC4-50
RX1 ANTENN	TESTLINE	39	-	5	DSGKC12	CLIP ON GROUND KIT FOR 1/2" CABLES, 5' LEAD W/ UNATTACHED 3/8" TWO HOL
RX1 ANTENN	TESTLINE	40	-	1	DSHG12	HG-12, LACE-UP GRIP FOR 1/2 COAX
RX1 ANTENN	ANTACC	41	-	7	DS43211A	BUTTERFLY HANGER FOR 1/2 IN OR 3/8 IN COAX CABLE
RX1 ANTENN	ANTACC	42	-	7	DSA317695	CABLE HANGER KIT HARDWARE KIT (10PCS) FOR BOTH 1/2" AND 7/8"CABLE
RX1 ANTENN	SURGE	43	-	1	DS1090501WA	RF SPD, 700-1000MHZ BROADBAND 15 VDC PASS NM ANT, NF EQUIP PIP, ASIG
RX1 ANTENN	SURGE	44	-	1	DS1090501WA	RF SPD, 700-1000MHZ BROADBAND 15 VDC PASS NM ANT, NF EQUIP PIP, ASIG
RX1 ANTENN	TESTLINE	45	-	25	DSEC150HF	COAXIAL CABLE, 1/4" HIFLEX, 50 OHM WITH BLACK PE JACKET
RX1 ANTENN	TESTLINE	46	-	2	DSNM50B14X	CONNECTOR, N MALE INTERFACE FOR EC1-50-HF
RX1 ANTENN	LOWERJUMPR	47	-	25	DSEC450	COAXIAL CABLE, 1/2" 50 OHM CORRUGATED COPPER WITH BLACK PE JACKET
RX1 ANTENN	LOWERJUMPR	48	-	2	DSNM50B12X	CONNECTOR, N MALE INTERFACE FOR EC4-50-HF
ANTENNA CO	TOOL	49	-	1	DSCT07850AIO2	CT07850AIO-2, PREP TOOL FOR 7/8" CABLE, 50 OHM
ANTENNA CO	TOOL	50	-	1	DSSPTC50AV12	CONNECTOR PREP TOOL FOR 1/2" STANDARD CONNECTORS
ANTENNA CO	TOOL	51	-	1	DSSPTC50B14X	CONNECTOR PREP TOOL FOR 1/4" HIFLEX CONNECTORS
MASTER	LICENSE	52	-	1	SQM01SUM0323	ASTRO MASTER SITE
MASTER	LICENSE	52	a	1	CA03517AB	ADD: CORE EXPANSION
MASTER	LICENSE	52	b	1	UA00153AB	ADD: P25 FDMA TRUNKING OPERATION SITE
MASTER	LICENSE	52	c	1	UA00159AB	ADD: P25 PHASE 2 TDMA TRKNG OP SITE LIC
MASTER	LICENSE	52	d	1	UA00160AA	ADD: PHASE 2 DYNAMIC TG ASGNMT SITE LIC
MASTER	LICENSE	52	e	10	UA00161AA	ADD: P25 PHASE 2 TDMA SW BASE RADIO LIC
MASTER	LICENSE	52	f	10	UA00162AA	ADD: PHASE 2 DYNAMIC CH BASE RADIO LIC





SUB SYS	BLOCK	LIM	O	QTY	NOMENCLATURE	DESCRIPTION
DC POWER	48VDC	53	-	1	DSLMPX40019ST	48V, 400A SIEMIC DC POWER SYS, 8 REC POS, 20 BKR POS, LVBD, LVLDD
DC POWER	48VDC	54	-	8	DSLMP50R	LAMARCHE 48V, 50A RECTIFIER
DC POWER	SPARE	55	-	1	DSLMP50R	LAMARCHE 48V, 50A RECTIFIER
DC POWER	48VDC	56	-	2	DS17254812060U	INVERTER, 1000 VA, 48 VDC INPUT TO 120 VAC OUTPUT, 60 HZ, 1 RU
DC POWER	48VDC	57	-	2	DSP4ALMLB20D1B	BREAKER 20 AMP FOR DCPS POWER SYSTEM
DC POWER	SPARE	58	-	1	DS17254812060U	INVERTER, 1000 VA, 48 VDC INPUT TO 120 VAC OUTPUT, 60 HZ, 1 RU
DC POWER	48VDC	59	-	1	DSWLBG896ST	BATTERY, 896AH 48VDC STRING CONSISTING OF (24) 2V CELLS ST RATE VLRA
GROUNDING	SURGE	60	-	2	DSTSJADP	RACK MOUNT GROUND BAR, 19 IN FOR TSJ AND WPH SERIES DATA SPDS
SURGE	SURGE	61	-	2	DS1101990	SPD, SHIELDED RJ-45 JACK, SINGLE LINE GBE (1000MBPS) R56 COMPLIANT
PDU	SURGE	62	-	2	DSRMP615A	SPD, TYPE 3, 120V RACK MOUNT, 15A PLUG-IN W/ (6) 15A NEMA 5-15 OUTLETS
DC POWER	BREAKER	63	-	5	DSP4ALMLB100D1B	BREAKER 100 AMP FOR DCPS POWER SYSTEM
DC POWER	BREAKER	64	-	8	DSP4ALMLB5D1B	BREAKER 5 AMP FOR DCPS POWER SYSTEM
DC POWER	BREAKER	65	-	6	DSP4ALMLB10D1B	BREAKER 10 AMP FOR DCPS POWER SYSTEM
DC POWER	BREAKER	66	-	2	DSP4ALMLB20D1B	BREAKER 20 AMP FOR DCPS POWER SYSTEM
Racks		67	-	4	TRN7342	SEVEN FOOT RACK
MPLS	MPLS	68	-	1	DSMW3HE06791AA	SAR-8 SHELF V2
MPLS	MPLS	69	-	36	DSMW3HE11801DA	NFM-P 19 STD LICENSE POINT
MPLS	MPLS	70	-	2	DSMW3HE02774AB	CONTROL SWITCH MODULE V2 (CSMV2) 48V
MPLS	MPLS	71	-	1	DSMW3HE02784MA	SAR RELEASE 9.0 BASIC OS LICENSE
MPLS	MPLS	72	-	1	DSMW3HE06792EA	FAN MODULE (SAR-8 SHELF V2) EXT TEMP -48VDC
MPLS	MPLS	73	-	2	DSMW3HE11473BK	PMC CARD W/ 4 GIG-E SFP BUNDLE (1) 3HE02782AA PMC, (4) 3HE00062CB SFP
MPLS	MPLS	74	-	8	DSMW3HE00062CB	SFP - GIGE BASE-T RJ45 R6/6 DDM -40/85C



SUB SYS	BLOCK	LIM	O	QTY	NOMENCLATURE	DESCRIPTION
MPLS	SPARES	75	-	1	DSMW3HE02774AB	CONTROL SWITCH MODULE V2 (CSMV2) 48V
MPLS	SPARES	76	-	1	DSMW3HE06792EA	FAN MODULE (SAR-8 SHELF V2) EXT TEMP -48VDC
MPLS	SPARES	77	-	1	DSMW3HE11473BK	PMC CARD W/ 4 GIG-E SFP BUNDLE (1) 3HE02782AA PMC, (4) 3HE00062CB SFP
MPLS	SPARES	78	-	1	DSMW3HE00062CB	SFP - GIGE BASE-T RJ45 R6/6 DDM -40/85C
Microwave		79	-	1	DQAVIATMW	Aviat MW link from Walton Lane to Kregor Peak
Siteboss equipment		80	-	1	DQSITEBOSS	Siteboss unit for new site
Building		81	-	1	DQPEPRO032822JP01	Pepro 8' x 12' x 9' Prefab Building
Generator		82	-	1	DQGENERAC20591958	Generac 35 KW/Diesel/1 Phase



SECTION 5

# FUNCTIONAL ACCEPTANCE TEST PLAN

A mutually agreed upon Acceptance Test Plan will be developed between EBRCSA and Motorola Solutions during the Kick-Off Meeting. This will include functional testing of the proposed equipment.



SECTION 6

# PROJECT SCHEDULE

Walton Lane Expansion					
ID	Task Name	Duration	Start	Finish	
1	<b>Implementation Project</b>	<b>359d</b>	<b>Mon 11/14/22</b>	<b>Thu 3/28/24</b>	
2	<b>Contract</b>	<b>25d</b>	<b>Mon 11/14/22</b>	<b>Fri 12/16/22</b>	
3	Contract Award	0d	Mon 11/14/22	Mon 11/14/22	11/14
4	Contract Administration	5d	Mon 11/14/22	Fri 11/18/22	
5	Project Kick-Off	5d	Mon 11/21/22	Fri 11/25/22	
6	Frequency Licensing <Customer Responsibility>	25d	Mon 11/14/22	Fri 12/16/22	
7	Contract Design Review	25d	Mon 11/28/22	Fri 12/30/22	
8	Review Contract Design	25d	Mon 11/28/22	Fri 12/30/22	
9	Design Approval	0d	Fri 12/30/22	Fri 12/30/22	12/30
10	<b>Order Processing</b>	<b>210d</b>	<b>Mon 1/2/23</b>	<b>Fri 10/20/23</b>	
11	Process Equipment list	5d	Mon 1/2/23	Fri 1/6/23	
12	Order Bridged	0d	Fri 1/6/23	Fri 1/6/23	1/6
13	<b>Manufacturing and Staging</b>	<b>205d</b>	<b>Mon 1/9/23</b>	<b>Fri 10/20/23</b>	
14	Manufacture Non-Motorola Equipment (37 Week Lead)	185d	Mon 1/9/23	Fri 9/22/23	
15	Manufacture Motorola FNE	60d	Mon 6/5/23	Fri 8/25/23	
16	Ship Equipment to Field	15d	Mon 9/25/23	Fri 10/13/23	
17	Receive and Inventory Equipment in Field	5d	Mon 10/16/23	Fri 10/20/23	
18	Warehouse	0d	Mon 10/16/23	Mon 10/16/23	
19	<b>Civil and Site Development</b>	<b>275d</b>	<b>Mon 1/2/23</b>	<b>Fri 1/19/24</b>	
20	<b>Civil / Site Development - Walton Lane</b>	<b>275d</b>	<b>Mon 1/2/23</b>	<b>Fri 1/19/24</b>	
21	Engineering / A&E / Permitting - MS	90d	Mon 1/2/23	Fri 5/5/23	
22	Pepro Building & Generator Installation/ Final Testing - MS	60d	Mon 10/23/23	Fri 1/12/24	
23	Perform R-56 Audit	5d	Mon 1/15/24	Fri 1/19/24	
24	Site Development Complete - Master	0d	Fri 1/12/24	Fri 1/12/24	1/12
25	<b>Installation</b>	<b>97d</b>	<b>Mon 10/23/23</b>	<b>Tue 3/5/24</b>	
26	<b>Microwave Installation</b>	<b>15d</b>	<b>Mon 1/15/24</b>	<b>Fri 2/2/24</b>	
27	Install Microwave	15d	Mon 1/15/24	Fri 2/2/24	
28	Microwave Installation Complete	0d	Fri 2/2/24	Fri 2/2/24	2/2
29	<b>Antenna Installation</b>	<b>5d</b>	<b>Mon 1/15/24</b>	<b>Fri 1/19/24</b>	
30	Install and Test Antenna Network	5d	Mon 1/15/24	Fri 1/19/24	
31	Antenna Installation Completed	0d	Fri 1/19/24	Fri 1/19/24	1/19
32	<b>FNE Installation</b>	<b>70d</b>	<b>Mon 10/23/23</b>	<b>Fri 1/26/24</b>	
33	Upgrade Operations	5d	Mon 10/23/23	Fri 10/27/23	

Walton Lane Expansion					
ID	Task Name	Duration	Start	Finish	
34	Install Simulcast Site <Customer Responsibility>	10d	Mon 1/15/24	Fri 1/26/24	
35	FNE Installations Complete	0d	Fri 1/26/24	Fri 1/26/24	
36	System Optimization	22d	Mon 2/5/24	Tue 3/5/24	
37	Link Verification	5d	Mon 2/5/24	Fri 2/9/24	
38	Optimize System FNE	15d	Wed 2/14/24	Tue 3/5/24	
39	Optimization Complete	0d	Tue 3/5/24	Tue 3/5/24	
40	Audit and Acceptance Testing	7d	Wed 3/6/24	Thu 3/14/24	
41	Perform System Testing <For Informational Purposes, Not a CATP>	5d	Wed 3/6/24	Tue 3/12/24	
42	SATP Acceptance	0d	Tue 3/12/24	Tue 3/12/24	
43	Cutover	1d	Thu 3/14/24	Thu 3/14/24	
44	Cutover FNE	1d	Thu 3/14/24	Thu 3/14/24	
45	Cutover Complete	0d	Thu 3/14/24	Thu 3/14/24	
46	Finalize	10d	Fri 3/15/24	Thu 3/28/24	
47	Final Inspection w/Customer	5d	Fri 3/15/24	Thu 3/21/24	
48	Punchlist Resolution	10d	Fri 3/15/24	Thu 3/28/24	
49	Finalize Documentation	10d	Fri 3/15/24	Thu 3/28/24	
50	Transition to Service/PTC	1d	Wed 3/27/24	Wed 3/27/24	
51	Final Acceptance	0d	Thu 3/28/24	Thu 3/28/24	

SECTION 7

# COVERAGE VERIFICATION

As part of the Walton Lane simulcast site add proposal, Motorola is including services to perform a coverage survey that includes the Somersville, James Donlan and Lone Tree Way areas of Antioch identified in the map below. The purpose of the coverage survey is to validate to EBRCSA and its end users that the coverage concerns in and around the James Donlan Blvd area of Antioch have been met with the addition of the Walton Lane site. The map below identifies the area in which Motorola will perform the coverage survey.

The coverage survey will use a Portable radio to simulate on hip-on Street coverage by sampling the inbound and outbound BER (Bit Error rate) information. Motorola will use Voyager<sup>SM</sup> to record the BER values, which will take sample data every ¼ mile. This process will require that one channel will be reserved for the duration of the coverage survey. Voyager generates computer files that include the Reference Tile Levels for each sampled tile. A copy of this raw data will be provided to EBRCSA as part of the coverage survey report. Motorola will submit to EBRCSA a brief report of the coverage survey results.

## 7.1 INFORMATIONAL ONLY COVERAGE MAP

The following map is for informational purposes only and does not constitute any form of coverage guarantee. This map depicts the CoCoCo East Simulcast Cell with the addition of the new Walton Lane remote site.



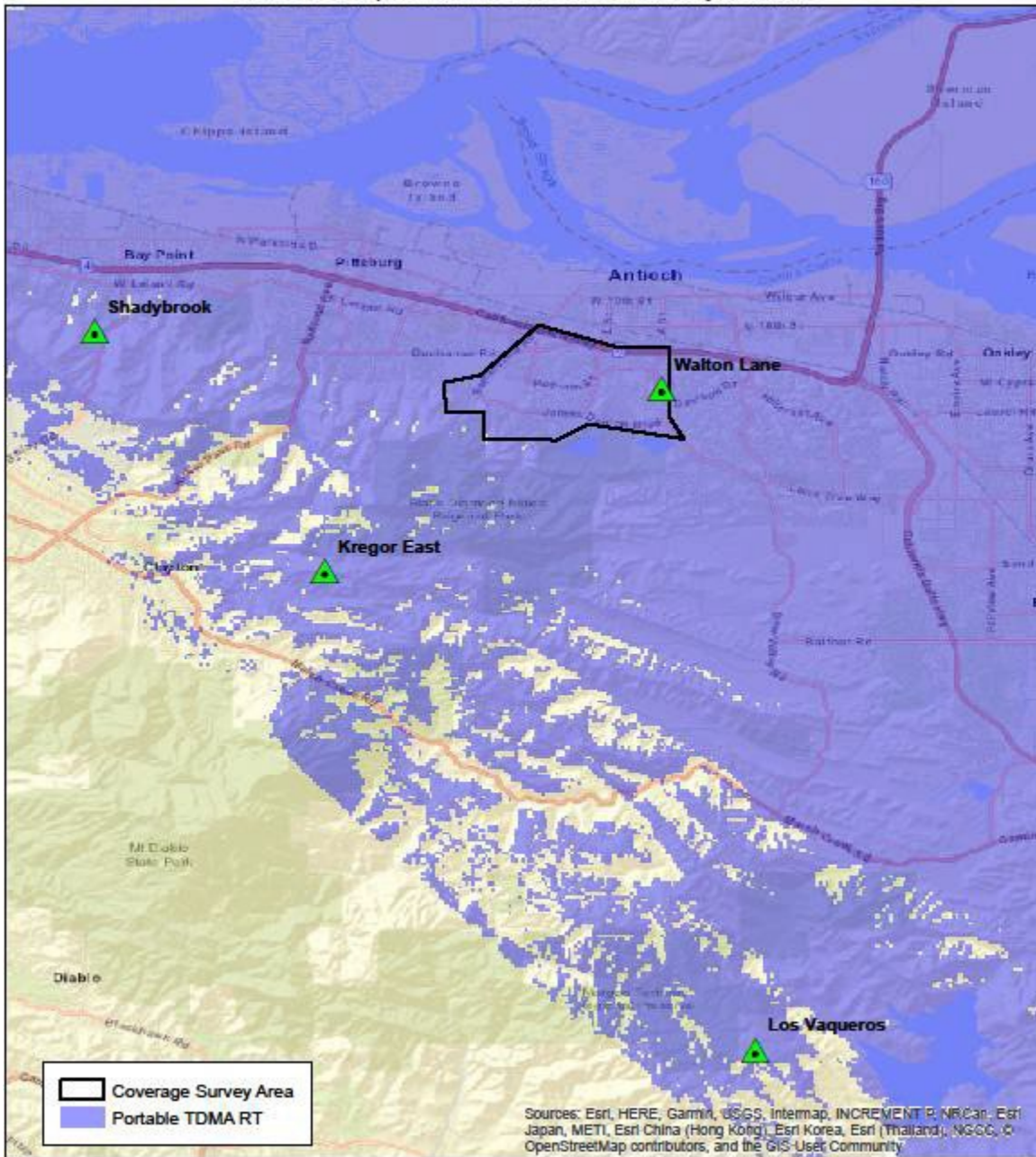


**CA\_EBRCS East Cell**

4 Site 700 MHz ASTRO TDMA System

Shaded Area Represents 95% Covered Area Reliability at DAQ-3.0

This map is a coverage estimate based upon the information provided and should be used for informational purposes only. This coverage estimate in no way constitutes a coverage guarantee and Motorola is not responsible for any deviation between the estimated and actual system performance.



Sources: Esri, HERE, Garmin, USGS, Intermap, INCREMENT P, NRCan, Esri Japan, METI, Esri China (Hong Kong), Esri Korea, Esri (Thailand), NGCC, OpenStreetMap contributors, and the GIS User Community

0 0.5 1 2 Miles  
1 in = 2 miles  
November 01, 2019

Portable Config: APX 7000 Portable, 12.5 kHz, 2.5W  
Tx/Rx at Hip with Belt Clip using RSM  
Portable Antenna: Dual Band

CA\_EBRCS  
East Cell TDMA Walton  
TBDH48  
TBDH48-ZBK 15G3  
Design 36

## 7.2 INFORMATIONAL ONLY COVERAGE SURVEY MAP

The following map is for informational purposes only and does not constitute any form of coverage guarantee.

This map has been provided to indicate the predicted improved coverage in and around the James Donlan Blvd area in Antioch.

This map illustrates the coverage survey Motorola will use to validate to EBRCSA and its end users that the coverage concerns in and around the James Donlan Blvd area of Antioch.





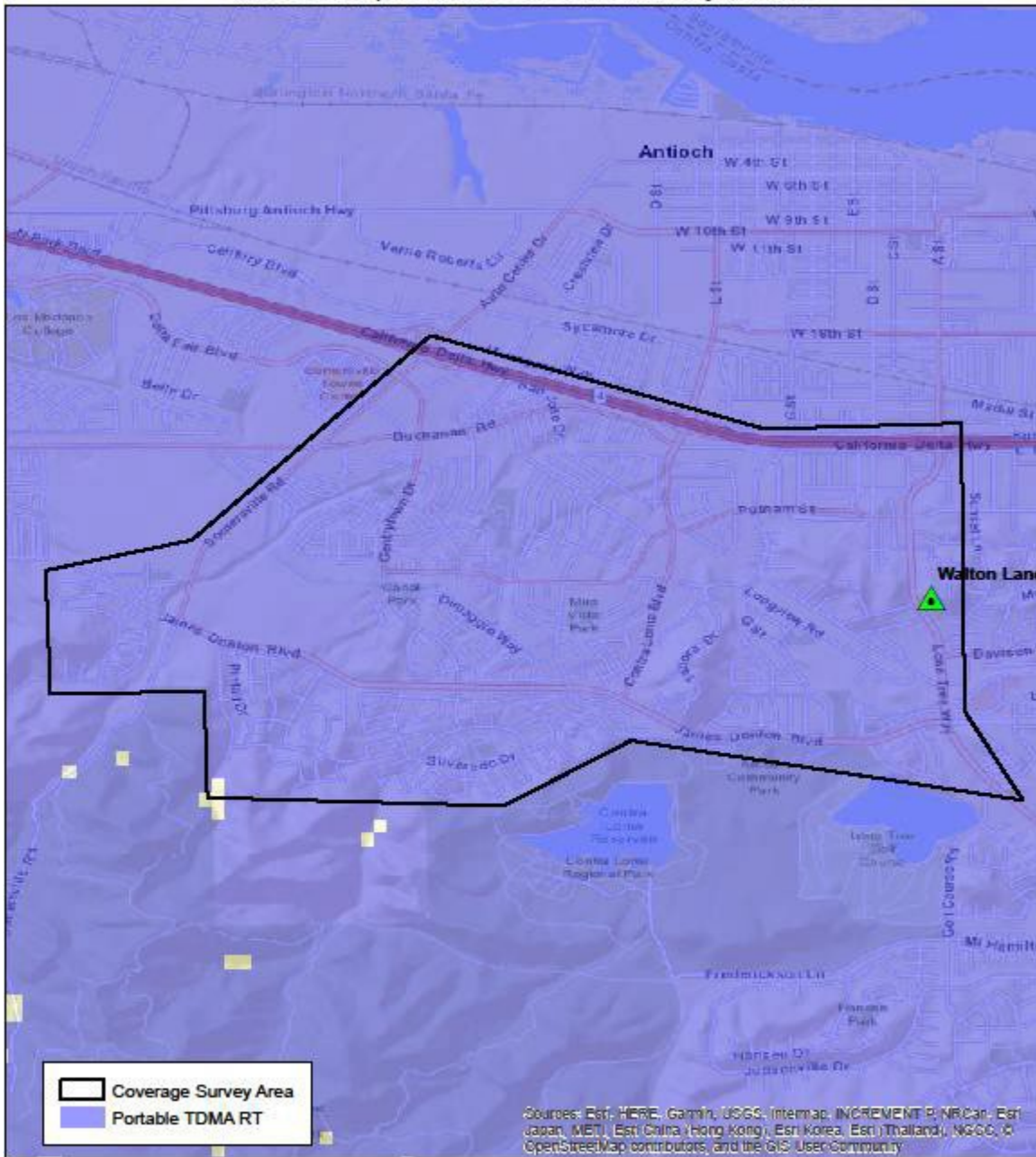


### CA\_EBRCS East Cell

4 Site 700 MHz ASTRO TDMA System

Shaded Area Represents 95% Covered Area Reliability at DAQ-3.0

This map is a coverage estimate based upon the information provided and should be used for informational purposes only. This coverage estimate in no way constitutes a coverage guarantee and Motorola is not responsible for any deviation between the estimated and actual system performance.



Coverage Survey Area  
 Portable TDMA RT

Sources: Esri, HERE, Garmin, USGS, Intermap, INCREMENT P, NRCan, Esri Japan, METI, Esri China (Hong Kong), Esri Korea, Esri (Thailand), NGIS, OpenStreetMap contributors, and the GIS User Community

00.126.25 0.5 Miles  
 1 in = 1 miles  
 November 01, 2019

Portable Config: APX 7000 Portable, 12.5 kHz, 2.5W  
 Tx/Rx at Hip with Belt Clip using RSM  
 Portable Antenna: Dual Band

CA\_EBRCS  
 East Cell TDMA Walton  
 TBDH48  
 TBDH48-2BK 15G3  
 Design 36

Informational Only Coverage Survey Area  
 Portable Round-Trip BER

SECTION 8

# WARRANTY AND MAINTENANCE SERVICES

## 8.1 WARRANTY SERVICES EBRCSA CHANNEL EXPANSIONS

Motorola Solutions will provide warranty services per our standard warranty terms and conditions as outlined within the Contract Documentation section within this proposal. In addition to the Standard Commercial Warranty, Post Warranty Services for this Channel Expansion project will be added to the future renegotiated East Bay Regional Communications System Authority (EBRCSA) Maintenance and System Upgrade Agreements and are not part of this offering.

## 8.2 WARRANTY SERVICES FOR REDUNDANT MICROWAVE HOP

Motorola Solutions has included the AVIAT CARE warranty package that includes the following:

- WARRANTY PLUS 48 Months from Factory Shipment (Based on RFU Count)
- Provides 24x7x365 San Antonio based Technical Assistance Center
- Advanced Replacement and Repair Logistics



SECTION 9

# PRICING

## 9.1 PRICING SUMMARY

Motorola is pleased to provide the following equipment and services to East Bay Regional Communications System Authority:

Description	Price (USD)
<b>Equipment:</b>	\$943,249
<ul style="list-style-type: none"> <li>- Antenna RFDS</li> <li>- Prime System Licenses</li> <li>- One (1) Redundant uWave Hop</li> <li>- 8' x 12' Shelter</li> <li>- 285-Gallon Diesel Sub-Base Fuel Tank</li> <li>- 35 kW Outdoor Generator</li> </ul>	
<b>Contra Costa County Contract Discount</b>	<b>-\$108,304</b>
<b>Equipment Total</b>	<b>\$834,946</b>
<b>Project Services:</b>	\$825,052
<ul style="list-style-type: none"> <li>- Project Management</li> <li>- Engineering Support</li> <li>- Detailed Design Review</li> <li>- Equipment Ordering and Manufacturing</li> <li>- Microwave Equipment Staging and Shipment</li> <li>- RFDS, Microwave, and Shelter Equipment Installation</li> <li>- Programming and Configuration</li> <li>- Functional Acceptance Testing</li> </ul>	
Estimated Tax on Equipment (10.25%)	\$85,582
<b>Project Total</b>	<b>\$1,745,580</b>



## 9.2 PAYMENT TERMS

### System Invoicing Milestones:

1. 25% of the Contract Price due upon contract execution.
2. 60% of the Contract Price due upon shipment of equipment.
3. 5% of the Contract Price due upon optimization of equipment.
4. 5% of the Contract Price upon system acceptance or start of beneficial use.
5. 5% of the Contract Price due upon Final Acceptance.

Overdue invoices will bear simple interest at the rate of ten percent (10%) per annum, unless such rate exceeds the maximum allowed by law, in which case it will be reduced to the maximum allowable rate.

## 9.3 MATERIALS AND LABOR PRICE INCREASE

In the event that there are significant increases in the prices that Motorola pays for materials and supplies for the work to be performed between the date the Agreement is signed and the date that materials are purchased for the work to be performed, Motorola shall be entitled to additional compensation from Customer as described herein. A significant increase in price is defined herein as an increase as to any specific items of materials of three percent (3%) or more from original proposal. In such a case, Customer shall pay to Motorola, on request, all sums by which the cost to Motorola for any such items of materials has increased beyond 3%. This would apply, but not be limited to price increases in any components included in the Bill of Materials or Scope of Work as well as manufactured products and equipment or third party manufactured products and equipment. Motorola shall not be responsible for increased prices of materials when caused by delays, shortages or unavailability of materials due to conditions not caused by Contractor. Any pricing change would be documented in a change order executed with the Customer.



SECTION 10

# CONTRACTUAL DOCUMENTATION

This proposal is subject to the terms and conditions of the Communications System Agreement, dated July, 7, 2009, as amended, between EBRCSA and Motorola Solutions (the "CSA"). Under Section 3.4 of the CSA, EBRCSA may purchase additional goods and services. Motorola Solutions' proposal is based on the assumption that EBRCSA will use this right under Section 3.4 of the CSA for the proposed transaction. Therefore, EBRCSA may accept the proposal by either issuing a Purchase Order that refers to the CSA and the Motorola Solutions proposal, or by executing a Change Order to the current CSA. If you prefer the latter method, Motorola Solutions will gladly prepare the Change Order document for execution.





**East Bay Regional  
Communications  
System Authority**



Participating agencies include Alameda and Contra Costa Counties and the following cities and special districts: Alameda, Albany, Antioch, Berkeley, Brentwood, Clayton, Concord, Danville, Dublin, El Cerrito, Emeryville, Fremont, Hayward, Hercules, Lafayette, Livermore, Martinez, Moraga, Newark, Oakley, Pinole, Pittsburg, Pleasant Hill, Pleasanton, Richmond, San Leandro, San Pablo, San Ramon, Union City, Walnut Creek, East Bay Regional Park District, Kensington Police Community Services District, Livermore Amador Valley Transit Authority, Moraga-Orinda Fire District, Rodeo-Hercules Fire District, San Ramon Valley Fire District, California Department of Transportation, Ohlone Community College District, Contra Costa Community College District, Dublin-San Ramon Services District and University of California, Berkeley

**AGENDA ITEM NO. 7.**

**AGENDA STATEMENT  
OPERATIONS COMMITTEE  
MEETING DATE: October 14, 2022**

**TO:** Operations Committee  
East Bay Regional Communications System Authority (EBRCSA)

**FROM:** Thomas G. McCarthy, Executive Director  
East Bay Regional Communications System Authority

**SUBJECT:** Budget Adjustment FY 21/22

**RECOMMENDATIONS:**

Receive a report from the Executive Director regarding the FY 21/22 Budget Adjustments. It is recommended that the Committee recommend to the Board of Directors the budget adjustment for FY 21/22 based on the information discussed in this item.

**SUMMARY/DISCUSSION:**

Craig Boyer, Alameda County Auditor's Office, has prepared the FY 21/22 Budget Adjustment so that the Operations Committee will have information concerning the changes to the Fiscal Year Budget as recommended:

Adjust the FY 21/22 budget for the following:

1. Increase insurance budget due to increased premiums, and increase maintenance budget due to higher than expected microwave and miscellaneous maintenance costs.

Below is a summary of the proposed budget adjustments for FY 21/22

**REVENUES**

Operating Payments	<u>47,000</u>
Total	<u>\$47,000</u>

**EXPENSES**

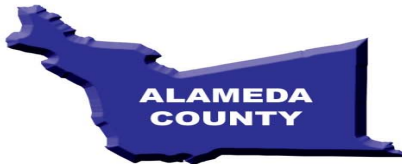
Insurance	2,000
Maintenance	<u>45,000</u>
Total	<u>\$47,000</u>

Operating payment revenues were budgeted in excess of appropriations for operating expenses for the fiscal year. Appropriations for capital expenses are in excess of service payments budgeted. Capital expenses in excess of service payment revenues draw on capital reserves in accordance with the Authority's reserve policies.

**RECOMMENDED ACTION:**

It is recommended that the Committee discuss and reach a consensus for the Adjustment to the Fiscal Year Budget for FY 21/22 for presentation to the Board of Directors.

Attachment "A": Budget Adjustment FY 21/22



# East Bay Regional Communications System Authority



Participating agencies include Alameda and Contra Costa Counties and the following cities and special districts: Alameda, Albany, Antioch, Berkeley, Brentwood, Clayton, Concord, Danville, Dublin, El Cerrito, Emeryville, Fremont, Hayward, Hercules, Lafayette, Livermore, Martinez, Moraga, Newark, Oakley, Pinole, Pittsburg, Pleasant Hill, Pleasanton, Richmond, San Leandro, San Pablo, San Ramon, Union City, Walnut Creek, East Bay Regional Park District, Kensington Police Community Services District, Livermore Amador Valley Transit Authority, Moraga-Orinda Fire District, Rodeo-Hercules Fire District, San Ramon Valley Fire District, Ohlone Community College District, Contra Costa Community College District, Dublin-San Ramon Services District and University of California, Berkeley

## BUDGET FISCAL YEAR 2021-22

### Revenues

Operating payments	\$ 6,840,000
Service payments	1,260,000
Interest	100,000
<b>Total revenues</b>	<b>8,200,000</b>

### Expenses

Administration	452,000
Audit fees	20,000
Contingency	100,000
Insurance	46,000
Lease	71,000
Legal	20,000
Licenses and permits	30,000
Membership fees	10,000
Maintenance	3,642,000
Security	15,000
Utilities	210,000
Website hosting	4,000
<b>Total operating expenses</b>	<b>4,620,000</b>
Capital	4,522,000
Debt Service	650,000
<b>Total expenses</b>	<b>9,792,000</b>
<b>Change in reserve balance</b>	<b>\$ (1,592,000)</b>

Assumption: Operating payments 19,000 radio count at \$30 per month per radio  
Service payments 7,000 radio count at \$15 per month per radio



**EAST BAY REGIONAL COMMUNICATIONS SYSTEM  
EXPENDITURE DETAIL  
FISCAL YEAR 2021-2022**

<b>OPERATING EXPENSES</b>	<b>FY21-22 Approved</b>	<b>FY21-22 Amendment #2</b>	<b>FY21-22 Amended</b>
Administration			
Executive director	\$ 263,000	\$ -	\$ 263,000
Administrative assistant	40,000	-	40,000
Planning	134,000	-	134,000
Travel	5,000	-	5,000
Miscellaneous	10,000	-	10,000
Audit fees	20,000	-	20,000
Contingency	100,000	-	100,000
Insurance	44,000	2,000	46,000
Lease	71,000	-	71,000
Legal	20,000	-	20,000
Licenses and permits	30,000	-	30,000
Membership fees	10,000	-	10,000
Maintenance			
Service agreement	1,095,000	-	1,095,000
Software maintenance (SUA II)	977,000	-	977,000
Network administration	267,000	-	267,000
HVAC maintenance	25,000	-	25,000
Generator maintenance	53,000	-	53,000
ALCO general maintenance	600,000	-	600,000
COCO general maintenance	265,000	-	265,000
CSI telecommunications	200,000	-	200,000
Microwave maintenance	100,000	40,000	140,000
Miscellaneous	15,000	5,000	20,000
Security	15,000	-	15,000
Utilities	210,000	-	210,000
Website hosting	4,000	-	4,000
<b>Total expenses</b>	<b><u>4,573,000</u></b>	<b><u>47,000</u></b>	<b><u>4,620,000</u></b>
<b>CAPITAL EXPENDITURES</b>			
Microwave Network Upgrade	962,000	-	962,000
Encryption Upgrade	1,621,000	-	1,621,000
TDMA Upgrade	1,664,000	-	1,664,000
DC Power Upgrade	250,000	-	250,000
Dispatch Consoles	25,000	-	25,000
<b>Total expenditures</b>	<b><u>4,522,000</u></b>	<b><u>-</u></b>	<b><u>4,522,000</u></b>
<b>DEBT SERVICE</b>			
Principal	512,000	-	512,000
Interest	138,000	-	138,000
<b>Total expenses</b>	<b><u>\$ 650,000</u></b>	<b><u>\$ 47,000</u></b>	<b><u>\$ 650,000</u></b>

1. Motorola service agreement increased due to a new 4 year contract
2. Network administration contract increased
3. TDMA Upgrade Expense is the annual payment for the Change Order approved by the Board of Directors
4. DC Power Upgrade Expense is an annual amount to replace the batteries in various locations

# EAST BAY REGIONAL COMMUNICATIONS SYSTEM

## PROJECTED CASH RESERVE BALANCES

### FISCAL YEAR 2021-2022

	FY20-21 Final Budget	FY20-21 Audited	FY21-22 Budget
<b>Operating Reserve</b>			
Beginning Balance	\$ 2,012,311	\$ 2,012,311	\$ 2,054,302
Operating Payments	6,450,000	6,392,348	6,840,000
Initial Payments	-	48,200	-
Interest	188,000	111,474	100,000
Operating Expenses	(4,544,000)	(4,108,604)	(4,620,000)
Transfer to Capital Reserve	(1,834,311)	(2,401,427)	(2,064,302)
<b>Ending Balance</b>	<b><u>2,272,000</u></b>	<b><u>2,054,302</u></b>	<b><u>2,310,000</u></b>
<b>Debt Service Reserve</b>			
Beginning Balance	1,000,000	1,000,000	1,000,000
Service Payments	1,232,000	1,244,766	1,260,000
Debt Service	(650,000)	(647,804)	(650,000)
Transfer to Capital Reserve	(582,000)	(596,962)	(610,000)
<b>Ending Balance</b>	<b><u>1,000,000</u></b>	<b><u>1,000,000</u></b>	<b><u>1,000,000</u></b>
<b>Capital Reserve</b>			
Beginning Balance	8,588,224	8,588,224	9,923,583
Transfer In	2,416,311	2,998,389	2,674,302
Capital	(2,066,000)	(1,663,030)	(4,522,000)
<b>Ending Balance</b>	<b><u>8,938,535</u></b>	<b><u>9,923,583</u></b>	<b><u>8,075,885</u></b>
<b>Total Reserve Balance</b>	<b><u>\$ 12,210,535</u></b>	<b><u>\$ 12,977,885</u></b>	<b><u>\$ 11,385,885</u></b>

1. Operating Reserve Balance is equal to 50% of the next fiscal years Operating Budget
2. Debt Reserve Balance is set to equal \$1,000,000 every fiscal year
3. Capital Reserve Balance is the projected remaining cash after the Operating and Debt Reserve requirements have been met

**EAST BAY REGIONAL COMMUNICATIONS SYSTEM AUTHORITY**

**10 YEAR CASH FLOW PROJECTION**

	<b>FY 2020-21</b>	<b>FY 2021-22</b>	<b>FY 2022-23</b>	<b>FY 2023-24</b>	<b>FY 2024-25</b>	<b>FY 2025-26</b>	<b>FY 2026-27</b>	<b>FY 2027-28</b>	<b>FY 2028-29</b>	<b>FY 2029-30</b>	<b>FY2030-31</b>
	<b>Audited</b>	<b>Budget</b>	<b>Forecast</b>	<b>Forecast</b>	<b>Forecast</b>	<b>Forecast</b>	<b>Forecast</b>	<b>Forecast</b>	<b>Forecast</b>	<b>Forecast</b>	<b>Forecast</b>
<b>Operating Reserve</b>											
Balance - beginning	\$ 2,012,311	\$ 2,054,302	\$ 2,310,000	\$ 2,279,865	\$ 2,327,312	\$ 2,377,877	\$ 2,438,713	\$ 2,509,874	\$ 2,565,915	\$ 2,632,392	\$ 2,709,364
Operating payments	6,392,348	6,840,000	6,737,400	6,737,400	6,737,400	6,737,400	6,737,400	6,737,400	6,737,400	6,737,400	6,737,400
Initial payments	48,200	-	-	-	-	-	-	-	-	-	-
Interest	111,474	100,000	100,000	100,000	100,000	100,000	100,000	100,000	100,000	100,000	100,000
Receipts from members	6,552,022	6,940,000	6,837,400	6,837,400	6,837,400	6,837,400	6,837,400	6,837,400	6,837,400	6,837,400	6,837,400
Payments to suppliers	(4,108,604)	(4,620,000)	(4,559,730)	(4,654,623)	(4,755,753)	(4,877,426)	(5,019,748)	(5,131,830)	(5,264,784)	(5,418,728)	(5,542,779)
Transfer to Capital Reserve	(2,401,427)	(2,064,302)	(2,307,805)	(2,135,331)	(2,031,082)	(1,899,138)	(1,746,491)	(1,649,529)	(1,506,139)	(1,341,700)	(1,232,596)
<b>Balance - ending</b>	<b>2,054,302</b>	<b>2,310,000</b>	<b>2,279,865</b>	<b>2,327,312</b>	<b>2,377,877</b>	<b>2,438,713</b>	<b>2,509,874</b>	<b>2,565,915</b>	<b>2,632,392</b>	<b>2,709,364</b>	<b>2,771,390</b>

**Debt Service Reserve**

Balance - beginning	1,000,000	1,000,000	1,000,000	1,000,000	1,000,000	1,000,000	1,000,000	1,000,000	-	-	-
Service payment	1,244,766	1,260,000	1,222,248	1,222,248	1,222,248	1,222,248	1,222,248	1,222,248	-	-	-
Principal	(492,000)	(512,000)	(532,000)	(553,000)	(600,000)	(600,000)	(623,000)	-	(576,000)	-	-
Bond interest	(155,804)	(138,000)	(118,000)	(97,000)	(74,000)	(50,000)	(27,000)	-	-	-	-
Transfer to Capital Reserve	(596,962)	(610,000)	(572,248)	(572,248)	(572,248)	(572,248)	(572,248)	(2,222,248)	-	-	-
<b>Balance - ending</b>	<b>1,000,000</b>	<b>1,000,000</b>	<b>1,000,000</b>	<b>1,000,000</b>	<b>1,000,000</b>	<b>1,000,000</b>	<b>1,000,000</b>	<b>1,000,000</b>	<b>-</b>	<b>-</b>	<b>-</b>

**Capital Reserve**

Balance - beginning	8,588,224	9,923,583	8,075,885	9,042,908	9,837,457	10,527,757	11,086,112	11,491,821	13,450,568	13,043,677	14,135,377
Grants	-	-	-	-	-	-	-	-	-	-	-
Transfer In	2,998,389	2,674,302	2,880,053	2,707,579	2,603,330	2,471,386	2,318,739	3,871,777	1,506,139	1,341,700	1,232,596
Capital	(1,663,030)	(4,522,000)	(1,913,030)	(1,913,030)	(1,913,030)	(1,913,030)	(1,913,030)	(1,913,030)	(1,913,030)	(250,000)	(250,000)
<b>Balance - ending</b>	<b>9,923,583</b>	<b>8,075,885</b>	<b>9,042,908</b>	<b>9,837,457</b>	<b>10,527,757</b>	<b>11,086,112</b>	<b>11,491,821</b>	<b>13,450,568</b>	<b>13,043,677</b>	<b>14,135,377</b>	<b>15,117,973</b>

<b>TOTAL RESERVE BALANCE</b>	<b>\$ 12,977,885</b>	<b>\$ 11,385,885</b>	<b>\$ 12,322,773</b>	<b>\$ 13,164,768</b>	<b>\$ 13,905,633</b>	<b>\$ 14,524,825</b>	<b>\$ 15,001,695</b>	<b>\$ 16,016,483</b>	<b>\$ 15,676,069</b>	<b>\$ 16,844,741</b>	<b>\$ 17,889,362</b>
------------------------------	----------------------	----------------------	----------------------	----------------------	----------------------	----------------------	----------------------	----------------------	----------------------	----------------------	----------------------

**SUPPLEMENTARY SCHEDULE FOR PAYMENTS TO SUPPLIERS**

Administration	\$ (262,403)	\$ (452,000)	\$ (327,540)	\$ (337,366)	\$ (347,487)	\$ (357,912)	\$ (368,649)	\$ (379,708)	\$ (391,099)	\$ (402,832)	\$ (414,917)
Audit fees	(17,160)	(20,000)	(20,600)	(21,218)	(21,855)	(22,511)	(23,186)	(23,882)	(24,598)	(25,336)	(26,096)
Contingency	-	(100,000)	(100,000)	(100,000)	(100,000)	(100,000)	(100,000)	(100,000)	(100,000)	(100,000)	(100,000)
Insurance	(35,049)	(46,000)	(47,380)	(48,801)	(50,265)	(51,773)	(53,326)	(54,926)	(56,574)	(58,271)	(60,019)
Lease	(65,231)	(71,000)	(73,130)	(75,324)	(77,584)	(79,912)	(82,309)	(84,778)	(87,321)	(89,941)	(92,639)
Legal	(10,235)	(20,000)	(20,600)	(21,218)	(21,855)	(22,511)	(23,186)	(23,882)	(24,598)	(25,336)	(26,096)
Licenses and permits	(3,115)	(30,000)	(30,900)	(31,827)	(32,782)	(33,765)	(34,778)	(35,821)	(36,896)	(38,003)	(39,143)
Membership fees	(8,867)	(10,000)	(10,300)	(10,609)	(10,927)	(11,255)	(11,593)	(11,941)	(12,299)	(12,668)	(13,048)
Maintenance											
Customer svc. agmt.	(1,077,595)	(1,095,000)	(1,088,000)	(1,099,000)	(1,131,970)	(1,165,929)	(1,200,907)	(1,236,934)	(1,274,042)	(1,312,263)	(1,351,631)
SUA II	(966,384)	(977,000)	(1,006,310)	(1,036,499)	(1,067,594)	(1,099,622)	(1,132,611)	(1,166,589)	(1,201,587)	(1,237,635)	(1,274,764)
System management	(261,415)	(267,000)	(275,010)	(267,000)	(275,010)	(283,260)	(291,758)	(300,511)	(309,526)	(318,812)	(328,376)
HVAC	(27,141)	(25,000)	(25,750)	(26,523)	(27,319)	(28,139)	(28,983)	(29,852)	(30,748)	(31,670)	(32,620)
Generators	(52,250)	(53,000)	(54,590)	(73,228)	(57,915)	(59,652)	(78,442)	(63,285)	(65,184)	(84,140)	(69,154)
ALCO maintenance	(600,000)	(600,000)	(600,000)	(600,000)	(600,000)	(600,000)	(600,000)	(600,000)	(600,000)	(600,000)	(600,000)
COCO maintenance	(238,772)	(265,000)	(272,950)	(281,139)	(289,573)	(298,260)	(307,208)	(316,424)	(325,917)	(335,695)	(345,766)
CSI telecommunications	(34,320)	(200,000)	(206,000)	(212,180)	(218,545)	(225,101)	(231,854)	(238,810)	(245,974)	(253,353)	(260,954)
Microwave maintenance	(240,109)	(140,000)	(144,200)	(148,526)	(152,982)	(157,571)	(162,298)	(167,167)	(172,182)	(177,347)	(182,667)
Miscellaneous	(16,340)	(20,000)	(20,600)	(21,218)	(21,855)	(22,511)	(23,186)	(23,882)	(24,598)	(25,336)	(26,096)
Security	(11,199)	(15,000)	(15,450)	(15,914)	(16,391)	(16,883)	(17,389)	(17,911)	(18,448)	(19,001)	(19,571)
Utilities	(177,618)	(210,000)	(216,300)	(222,789)	(229,473)	(236,357)	(243,448)	(250,751)	(258,274)	(266,022)	(274,003)
Web site hosting	(3,400)	(4,000)	(4,120)	(4,244)	(4,371)	(4,502)	(4,637)	(4,776)	(4,919)	(5,067)	(5,219)
Payments to suppliers	<b>\$ (4,108,604)</b>	<b>\$ (4,620,000)</b>	<b>\$ (4,559,730)</b>	<b>\$ (4,654,623)</b>	<b>\$ (4,755,753)</b>	<b>\$ (4,877,426)</b>	<b>\$ (5,019,748)</b>	<b>\$ (5,131,830)</b>	<b>\$ (5,264,784)</b>	<b>\$ (5,418,728)</b>	<b>\$ (5,542,779)</b>